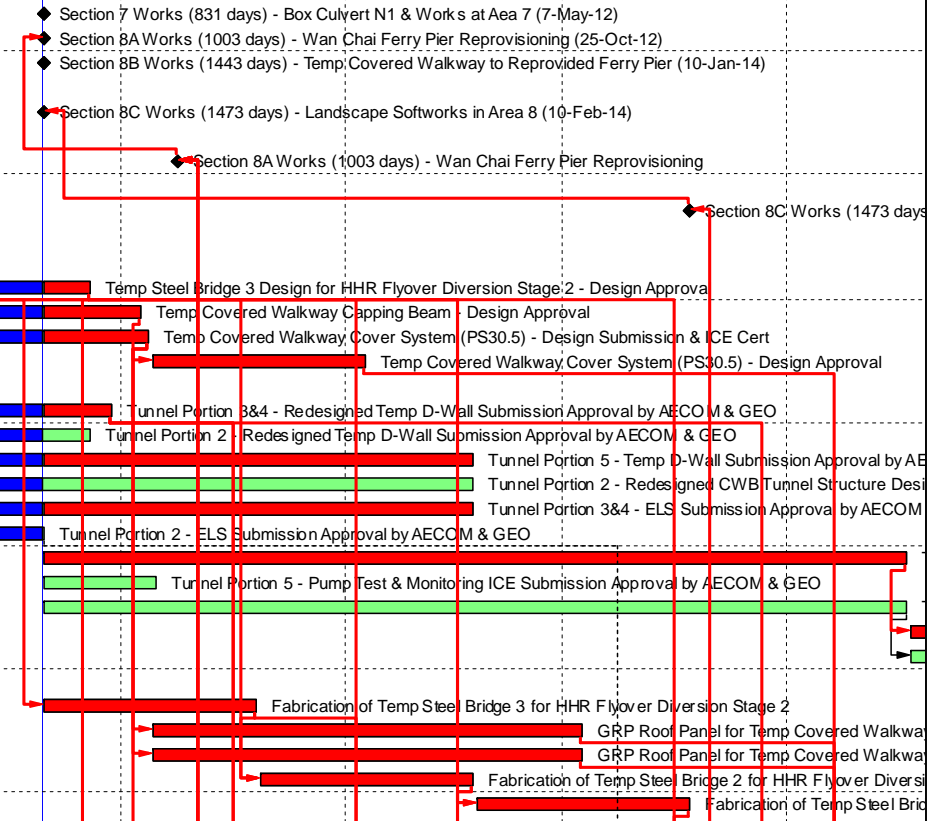


Activity ID	Activity Name	OD	RD	Start	Finish	Total Float	Calendar	2014						
								Apr 52	May 53	Jun 54	Jul 55	Aug 56		
Wan Chai Development Phase II - Central - Wan Chai Bypass at Wan Chai East (dd 20-Apr-14)														
Programme Milestones (Revised up to EOTO No.10 Issued on 29-Nov-13)														
Contractual Completion Dates														
KDC0110	Section 7 Works (831 days) - Box Culvert N1 & Works at Aea 7 (7-May-12)	0	0	20-Apr-14	20-Apr-14*	-712	Calendar Day							
KDC0120	Section 8A Works (1003 days) - Wan Chai Ferry Pier Re-provisioning (25-Oct-12)	0	0	20-Apr-14	20-Apr-14*	-541	Calendar Day							
KDC0130	Section 8B Works (1443 days) - Temp Covered Walkway to Re-provided Ferry Pier (10-Jan-14)	0	0	20-Apr-14	20-Apr-14*	-99	Calendar Day							
Soft Landscaping & Establishment Key Dates														
KDC0140	Section 8C Works (1473 days) - Landscape Softworks in Area 8 (10-Feb-14)	0	0	20-Apr-14	20-Apr-14*	-68	Calendar Day							
Forecast Completion Dates														
KDF0120	Section 8A Works (1003 days) - Wan Chai Ferry Pier Re-provisioning	0	0	08-May-14	18-Jul-14	-158	Calendar Day							
Soft Landscaping & Establishment Key Dates														
KDF0140	Section 8C Works (1473 days) - Landscape Softworks in Area 8	0	0	18-Jul-14	18-Jul-14	-158	Calendar Day							
Preliminaries														
Critical Submission & Approval														
PRE-SUB-1030B	Temp Steel Bridge 3 Design for HHR Flyover Diversion Stage 2 - Design Approval	60	7	25-May-13 A	26-Apr-14	-367	Calendar Day							
PRE-SUB-1000B	Temp Covered Walkway Capping Beam - Design Approval	30	14	19-Jun-13 A	03-May-14	-421	Calendar Day							
PRE-SUB-1010A	Temp Covered Walkway Cover System (PS30.5) - Design Submission & ICE Cert	90	15	18-Oct-13 A	04-May-14	-411	Calendar Day							
PRE-SUB-1010B	Temp Covered Walkway Cover System (PS30.5) - Design Approval	30	30	05-May-14	03-Jun-14	-411	Calendar Day							
CSD for CWB Tunnel														
PRE-CSD-3000B	Tunnel Portion 3&4 - Redesign Temp D-Wall Submission Approval by AECOM & GEO	30	10	08-Jun-13 A	29-Apr-14	-354	Calendar Day							
PRE-CSD-2000B	Tunnel Portion 2 - Redesign Temp D-Wall Submission Approval by AECOM & GEO	30	7	19-Jul-13 A	26-Apr-14	1573	Calendar Day							
PRE-CSD-5000B	Tunnel Portion 5 - Temp D-Wall Submission Approval by AECOM & GEO	60	60	15-Aug-13 A	18-Jun-14	-15	Calendar Day							
PRE-CSD-2030B	Tunnel Portion 2 - Redesign CWB Tunnel Structure Design Submission Approval by AECOM	60	60	16-Nov-13 A	18-Jun-14	233	Calendar Day							
PRE-CSD-3010B	Tunnel Portion 3&4 - ELS Submission Approval by AECOM & GEO	60	60	17-Jan-14 A	18-Jun-14	-77	Calendar Day							
PRE-CSD-2010B	Tunnel Portion 2 - ELS Submission Approval by AECOM & GEO	60	0	30-Jan-14 A	20-Apr-14	130	Calendar Day							
PRE-CSD-5010A	Tunnel Portion 5 - ELS ICE Submission	120	120	20-Apr-14	17-Aug-14	-18	Calendar Day							
PRE-CSD-5020B	Tunnel Portion 5 - Pump Test & Monitoring ICE Submission Approval by AECOM & GEO	16	16	20-Apr-14	05-May-14	132	Calendar Day							
PRE-CSD-6010A	Tunnel Portion 6 - ELS ICE Submission	120	120	20-Apr-14	17-Aug-14	215	Calendar Day							
PRE-CSD-5010B	Tunnel Portion 5 - ELS Submission Approval by AECOM & GEO	60	60	18-Aug-14	16-Oct-14	-18	Calendar Day							
PRE-CSD-6010B	Tunnel Portion 6 - ELS Submission Approval by AECOM & GEO	60	60	18-Aug-14	16-Oct-14	215	Calendar Day							
Critical Procurement & Site Delivery														
PRE-PRO-1200C	Fabrication of Temp Steel Bridge 3 for HHR Flyover Diversion Stage 2	30	30	20-Apr-14	19-May-14	-367	Calendar Day							
PRE-PRO-1100A	GRP Roof Panel for Temp Covered Walkway (Type 1)	60	60	05-May-14	03-Jul-14	-381	Calendar Day							
PRE-PRO-1100B	GRP Roof Panel for Temp Covered Walkway (Type 2)	60	60	05-May-14	03-Jul-14	-381	Calendar Day							
PRE-PRO-1200B	Fabrication of Temp Steel Bridge 2 for HHR Flyover Diversion Stage 2	30	30	20-May-14	18-Jun-14	-367	Calendar Day							
PRE-PRO-1200A	Fabrication of Temp Steel Bridge 1 for HHR Flyover Diversion Stage 2	30	30	19-Jun-14	18-Jul-14	-367	Calendar Day							
Section 3 of the Works - Re-provisioning of Government Helipad and Public Toilet														
Outstanding Works														
S3-0070-1499	Reinstatement of armour rock, retaining walls & new covered walkway along Expo Drive East	254	28	11-Aug-12 A	26-May-14	1241	HK Working Day							
Section 4A of the Works - Cooling Water Pumping System for Sun Hung Kai Centre (P8)														
Cooling Mains Work above Tunnel Portion & connecting to Pump Station														
S4A-0900	Outstanding Works	365	302	16-Feb-14 A	15-Feb-15	1278	Calendar Day							
Section 4B of the Works - Cooling Water Pumping System for China Resources Building (P9)														
Cooling Mains Work within Hoarding Area														
Zone 4A Pipe Installation CHAI 080-160		6	6	22-Apr-14	28-Apr-14	1263	HK Working Day							
S4B-0060-180	Reinstatement	6	6	22-Apr-14	28-Apr-14	1263	HK Working Day							
Cooling Mains Work at Junction between Convention Avenue and Tonnochy Road														
Zone 4B-1& 4B-2 Pipe Installation CHAI 170-160		3	3	22-Apr-14	24-Apr-14	1266	HK Working Day							
S4B-0060-300	Reinstatement	3	3	22-Apr-14	24-Apr-14	1266	HK Working Day							
Cooling Mains Work above Tunnel Portion & connecting to Pump Station														
S4B-0900	Outstanding Works	365	164	01-Oct-13 A	30-Sep-14	1416	Calendar Day							
Section 4C of the Works - Cooling Water Pumping System for Great Eagle Centre / Harbour Centre (P7)														
Cooling Mains Work within Hoarding Area CHAG 210-150														
S4C-0060-150	Reinstatement	6	6	22-Apr-14	28-Apr-14	1263	HK Working Day							
Cooling Mains Work at Junction between Convention Avenue and Tonnochy Road														
Zone 4B-1& 4B-2 Pipe Installation CHAG 210-220		3	3	22-Apr-14	24-Apr-14	1266	HK Working Day							
S4C-0060-240	Reinstatement	3	3	22-Apr-14	24-Apr-14	1266	HK Working Day							
Cooling Mains Work above Tunnel Portion & connecting to Pump Station														
S4C-0900	Outstanding Works	365	215	21-Nov-13 A	20-Nov-14	1365	Calendar Day							
Section 5 of the Works - WSD Salt Water Pumping System														
WSD Salt Water Pumping Station														
Builder and E&M works for WSD's pumping station														
Finishing works														
S5-0060-1801	Metal Works & Misc. Works	282	30	06-Jun-12 A	28-May-14	1239	HK Working Day							
Salt Water Intake Culvert Construction														
Bay 6 - Bay 18: Ex-Pet Garden & Hung Hing Road		23	7	20-Apr-13 A	29-Apr-14	-581	HK Working Day							
S5-100-3333	Backfilling to Bay 6 to Bay 11 (2,000m3; 150m3/d)	23	7	20-Apr-13 A	29-Apr-14	-581	HK Working Day							
Overall Testing & Commissioning of Re-provisioned Salt Water Intake System														
S5-0900	Outstanding Works	365	320	06-Mar-14 A	05-Mar-15	1260	Calendar Day							



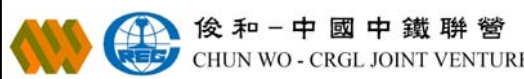
俊和 - 中國中鐵聯營
CHUN WO - CRGL JOINT VENTURE

- Remaining Work
- Actual Work
- Summary Bar
- Critical Remaining Work
- Milestone

CEDD CONTRACT NO. HK/2009/02
Wan Chai Development Phase II - Central-Wan Chai Bypass at Wan Chai East (Contract 2)
3-MONTH ROLLING PROGRAMME (dd 20-Apr-14)

Date	Revision	Checked	Approved
20-Apr-14	3MRP		
20-Feb-14	Baseline Prog		

Activity ID	Activity Name	OD	RD	Start	Finish	Total Float	Calendar	2014							
								Apr 52	May 53	Jun 54	Jul 55	Aug 56			
Section 7 of the Works - Box Culvert N1 & Flood Relief System															
Box Culvert and Flood Relief System Construction															
S7-191212-260	Backfilling for 1050mm FRP installation & Strut Removal	4	4	22-Apr-14	26-Apr-14	-213	HK Working Day								
Works in Area 7															
S7-1200	Strut S3 Removal	7	7	09-Apr-14 A	26-Apr-14	-1066	Calendar Day								
S7-1000	Load Transfer for King Post to Completed Roof Slab	14	14	27-Apr-14	10-May-14	-1066	Calendar Day								
S7-1100	Tunnel Portion 1 Backfilling to Strut S3 Level (15,000m3; 2,000m3/d)	8	8	20-May-14	27-May-14	-1075	Calendar Day								
S7-1250	Backfill and SWIC Temp U/U Bridge Load Transfer (10,000m3; 2,000m3/d)	12	12	28-May-14	08-Jun-14	-1075	Calendar Day								
S7-1300	Tunnel Portion 1 Backfilling to Strut S2 Level (15,000m3; 2,000m3/d)	8	8	09-Jun-14	16-Jun-14	-1075	Calendar Day								
S7-1400	Strut S2 Removal	14	14	17-Jun-14	30-Jun-14	-1075	Calendar Day								
S7-1420	Sewage Outfall Temp U/U Bridge Load Transfer	7	7	01-Jul-14	07-Jul-14	-1075	Calendar Day								
S7-1500	Tunnel Portion 1 Backfilling to Strut S1 Level (25,000m3; 2,000m3/d)	13	13	08-Jul-14	20-Jul-14	-1075	Calendar Day								
S7-1600	Strut S1 Removal	7	7	21-Jul-14	27-Jul-14	-1075	Calendar Day								
S7-1620	Box Culvert N1 Temp U/U Bridge Load Transfer	7	7	21-Jul-14	27-Jul-14	-1075	Calendar Day								
S7-1640	Backfill and Cooling Mains Temp U/U Bridge Load Transfer (5,000m3; 2,000m3/d)	7	7	28-Jul-14	03-Aug-14	-1075	Calendar Day								
S7-1700	D-Wall Trimming, Drain Installation & Backfilling to Ground Level (13,500m3; 1,000m3/d)	21	21	04-Aug-14	24-Aug-14	-1075	Calendar Day								
Transformer Building for Dining Services at Ferry Pier (VO116)															
Civil Works															
S7-TB-2000	Lay 500mm thk. Rubble Mound	2	2	11-Aug-14	12-Aug-14	-861	HK Working Day								
S7-TB-2010	Blinding Layer	1	1	13-Aug-14	13-Aug-14	-861	HK Working Day								
S7-TB-2020	Base Slab Construction (9.3m x 4.9m x 1m thick)	7	7	14-Aug-14	21-Aug-14	-861	HK Working Day								
Section 8A of the Works - Re-provisioning of Wan Chai Ferry Pier in Area 8															
ABWF & E&M Installation															
S8A-BS-0400	Fender Flat Pads Preparation & Installation	40	3	14-Feb-14 A	24-Apr-14	-183	HK Working Day								
S8A-BS-0410	I Beam & Fender Panel Installation	54	42	29-Mar-14 A	12-Jun-14	-208	HK Working Day								
Specific Procurement															
S8A-BS-0280B	E&M - ELV System (Misc.)	60	30	29-May-13 A	19-May-14	-299	Calendar Day								
Level 1															
Public Area															
S8A-BS-1000	ABWF Works, Plumbing & E&M First Fix	132	7	17-Dec-12 A	29-Apr-14	-197	HK Working Day								
S8A-BS-1070	E&M Final Fix	15	15	05-Sep-13 A	04-May-14	-376	Calendar Day								
Ticket Room, Changing Room & Storing Room															
S8A-BS-1860	ELV System Installation (Emergency Bell System)	30	5	08-Oct-13 A	24-Apr-14	-258	Calendar Day								
S8A-BS-1870	T&C	14	14	25-Apr-14	08-May-14	-258	Calendar Day								
Toilet															
S8A-BS-1170	E&M Final Fix	14	14	05-Sep-13 A	07-May-14	-257	Calendar Day								
S8A-BS-1160	Sanitary Equipment	28	18	10-Jan-14 A	07-May-14	-257	Calendar Day								
Lift															
S8A-BS-1440	T&C	7	7	09-Jan-14 A	26-Apr-14	-267	Calendar Day								
Metalworks															
S8A-BS-1640	G3 Glass Panel Installation	15	7	07-Aug-13 A	26-Apr-14	-246	Calendar Day								
S8A-BS-1630	SS Balustrade Post & Frame Installation	24	3	17-Oct-13 A	22-Apr-14	-242	Calendar Day								
Level 2															
General Area															
S8A-BS-2000	ABWF and E&M First Fix at Level 2 @ +7.70mPD	123	14	17-Dec-12 A	09-May-14	-180	HK Working Day								
Toilet															
S8A-BS-2150	Sanitary Equipment	10	5	30-Aug-13 A	24-Apr-14	-560	Calendar Day								
S8A-BS-2160	E&M Final Fix	14	14	25-Apr-14	08-May-14	-560	Calendar Day								
Metalworks & Glass Panel Installation															
S8A-BS-2230	G3 Glass Panel Installation	14	10	06-Mar-08 A	29-Apr-14	-551	Calendar Day								
S8A-BS-2210	Glass Curtain Wall (Non-FRP) Installation (12mm/19mm thk.)	21	3	25-Jul-13 A	22-Apr-14	-544	Calendar Day								
Level M															
Movable Ramp Machine Room															
S8A-BS-3410	T&C	14	14	20-Mar-14 A	03-May-14	-555	Calendar Day								
Cleaning/ Flushing Water Pump Room															
S8A-BS-3620	T&C	7	7	20-Apr-14	26-Apr-14	-548	Calendar Day								
Roof															
S8A-BS-4010	E&M Installation	28	2	10-Sep-13 A	21-Apr-14	-543	Calendar Day								
Works in Area 8 - ABWF Works at Observation Deck of Ferry Pier															
S8B-FP-01200	Aluminium Cladding	95	10	26-Mar-13 A	29-Apr-14	-109	Calendar Day								
S8B-FP-01100	Roof Finishes & Misc. ABWF Installation	120	45	28-Oct-13 A	03-Jun-14	-144	Calendar Day								
S8B-FP-01300	Handrail & Glass Balustrade Installation	45	14	21-Dec-13 A	03-May-14	-113	Calendar Day								
T&C and Handover															
S8A-TC-9000	Fitting Out Works by Star Ferry (PS36.03(4))	180	176	16-Apr-14 A	12-Oct-14	-415	Calendar Day								
S8A-TC-1500	EMSD Inspection for Lift	0	0	17-May-14	17-May-14	-211	HK Working Day								
S8A-TC-8000	ELV System Installation (Misc.)	30	30	20-May-14	18-Jun-14	-299	Calendar Day								
Section 8B of the Works - Temporary Covered Walkway & Works in Area 8															
Temporary Covered Walkway															
S8B-TGW-01200B	Temp Covered Walkway Footing & Drawpits - GL1-7 (Type 3) near New Ferry Pier (Remaining)	30	28	18-Nov-13 A	26-May-14	-299	HK Working Day								



CHUN WO - CRGL JOINT VENTURE

- Remaining Work
- Actual Work
- Summary Bar
- Critical Remaining Work
- Milestone

CEDD CONTRACT NO. HK/2009/02
Wan Chai Development Phase II - Central-Wan Chai Bypass at Wan Chai East (Contract 2)
3-MONTH ROLLING PROGRAMME (dd 20-Apr-14)

Date	Revision	Checked	Approved
20-Apr-14	3MRP		
20-Feb-14	Baseline Prog		

Activity ID	Activity Name	OD	RD	Start	Finish	Total Float	Calendar	2014				
								Apr 52	May 53	Jun 54	Jul 55	Aug 56
S8B-TCW-01300	Temp Covered Walkway - GL7-23 (Type 2B) - Excavation along Bulkhead Wall to +2mPD	7	7	05-May-14	13-May-14	-336	HK Working Day					
S8B-TCW-01400	Temp Covered Walkway - GL7-23 (Type 2B) - D-Wall Trimming (50m@2m/d)	28	28	14-May-14	16-Jun-14	-336	HK Working Day					
S8B-TCW-01100	Temp Covered Walkway Footing & Drawpits - GL23-34 (Type 2A) at WCR2	28	28	26-May-14	27-Jun-14	-326	HK Working Day					
S8B-TCW-01500	Temp Covered Walkway - GL7-23 (Type 2B) - Capping Beam Construction (50m@1.5m/d)	34	34	30-May-14	10-Jul-14	-336	HK Working Day					
S8B-TCW-01000	Temp Covered Walkway Footing & Drawpits - GL34-GL53 (Type 1) at Convention Avenue Footpath	28	28	03-Jun-14	05-Jul-14	-332	HK Working Day					
S8B-TCW-01700	Temp Covered Walkway - Steelworks Fixing	30	30	11-Jul-14	09-Aug-14	-418	Calendar Day					
S8B-TCW-01800	Temp Covered Walkway - Roof Panel Installation	30	30	10-Aug-14	08-Sep-14	-418	Calendar Day					
S8B-TCW-02000	Temp Covered Walkway - Paving Block Laying & Planter	30	30	10-Aug-14	08-Sep-14	-403	Calendar Day					
S8B-TCW-01850	Temp Covered Walkway - Drainage Installation	45	45	10-Aug-14	23-Sep-14	-403	Calendar Day					
Section 9B of the Works - CWB Tunnel Structure (CH3400 - CH3796)		253	190	11-Nov-13 A	06-Dec-14	263						
Tunnel Portion 1 (CH3500-CH3630)		64	22	05-Mar-14 A	19-May-14	431						
CWB Structural Works												
S9B-T1-5000	Roof Slab Crack Rectification & Testing Proposal Submission & Approval	21	7	06-Mar-14 A	26-Apr-14	-1075	Calendar Day					
S9B-T1-5001	Crack Rectification & Testing for Roof Slab	14	14	27-Apr-14	10-May-14	-1075	Calendar Day					
Bay 1												
Roof Concrete, Waterproofing & Scaffolding Removal												
S9B-T1-B1-1440	Roof - Scaffolding Dismantling	3	1	26-Mar-14 A	19-May-14	-855	HK Working Day					
S9B-T1-B1-1430	Roof - Waterproofing	7	7	12-May-14	19-May-14	-862	HK Working Day					
Bay 2												
Roof Concrete, Waterproofing & Scaffolding Removal												
S9B-T1-B2-1440	Roof - Scaffolding Dismantling	3	1	05-Mar-14 A	22-Apr-14	-834	HK Working Day					
S9B-T1-B2-1430	Roof - Waterproofing	7	7	12-May-14	19-May-14	-862	HK Working Day					
Bay 3												
Roof Concrete, Waterproofing & Scaffolding Removal												
S9B-T1-B3-1440	Roof - Scaffolding Dismantling	3	1	20-Mar-14 A	22-Apr-14	-834	HK Working Day					
S9B-T1-B3-1430	Roof - Waterproofing	7	7	12-May-14	19-May-14	-862	HK Working Day					
Bay 4												
Roof Concrete, Waterproofing & Scaffolding Removal												
S9B-T1-B4-1450	Roof - Scaffolding Dismantling	3	2	14-Apr-14 A	23-Apr-14	-835	HK Working Day					
S9B-T1-B4-1440	Roof - Waterproofing	7	7	12-May-14	19-May-14	-862	HK Working Day					
Bay 4A												
Roof Concrete, Waterproofing & Scaffolding Removal												
S9B-T1-B4A-1450	Roof - Scaffolding Dismantling	3	2	11-Apr-14 A	23-Apr-14	-835	HK Working Day					
S9B-T1-B4A-1440	Roof - Waterproofing	7	7	12-May-14	19-May-14	-862	HK Working Day					
Bay 5												
Roof Concrete, Waterproofing & Scaffolding Removal												
S9B-T1-B5-1450	Roof - Scaffolding Dismantling	3	3	24-Apr-14	26-Apr-14	-838	HK Working Day					
S9B-T1-B5-1440	Roof - Waterproofing	7	7	12-May-14	19-May-14	-862	HK Working Day					
Bay 6 (For OHVD Base Slab & Side Wall, Combined to Bay 5)												
Wall												
S9B-T1-B6-1120	Wall (Middle Late Cast) - Rebar Fixing	4	4	30-Apr-14	05-May-14	436	HK Working Day					
S9B-T1-B6-1130A	Wall (Middle Late Cast) - Formwork	3	3	07-May-14	09-May-14	436	HK Working Day					
S9B-T1-B6-1130B	Wall (Middle Late Cast) - Concrete	1	1	10-May-14	10-May-14	436	HK Working Day					
S9B-T1-B6-1140	Wall (Middle Late Cast) - Curing & Formwork Removal	3	3	11-May-14	13-May-14	538	Calendar Day					
Roof Concrete, Waterproofing & Scaffolding Removal												
S9B-T1-B6-1450	Roof - Scaffolding Dismantling	3	3	22-Apr-14	24-Apr-14	-836	HK Working Day					
S9B-T1-B6-1440	Roof - Waterproofing	7	7	12-May-14	19-May-14	-862	HK Working Day					
Bay 7												
Roof Concrete, Waterproofing & Scaffolding Removal												
S9B-T1-B7-1450	Roof - Scaffolding Dismantling	3	3	22-Apr-14	24-Apr-14	-836	HK Working Day					
S9B-T1-B7-1440	Roof - Waterproofing	7	7	12-May-14	19-May-14	-862	HK Working Day					
Bay 8												
Roof Concrete, Waterproofing & Scaffolding Removal												
S9B-T1-B8-1440	Roof - Scaffolding Dismantling	3	3	26-Apr-14	29-Apr-14	-840	HK Working Day					
S9B-T1-B8-1430	Roof - Waterproofing	3	3	12-May-14	14-May-14	-858	HK Working Day					
Tunnel Portion 2 (CH3425-CH3500)		186	186	26-Apr-14	06-Dec-14	41						
Foundation												
S9B-T2-1030	Stage 2 Bored Pile works - PS15 & PS16 (14d/pile; 1 rig)	28	28	26-Apr-14	30-May-14	50	HK Working Day					
S9B-T2-1130	Tunnel portion 2 Pump Test	28	28	31-May-14	27-Jun-14	61	Calendar Day					
CWB Structural Works												
S9B-T2-2000	Tunnel portion 2 ELSW excavation (62,500m ³ ; 500m ³ /d)	125	125	11-Jul-14	06-Dec-14	41	HK Working Day					
Tunnel Portion 3 & Tunnel Portion 4 (CH3630-CH3790)		212	122	11-Nov-13 A	16-Sep-14	-158						
Foundation												
Stage 2 - Southern Wall after HHR Flyover Diversion (Stage 1) (C130A-P131; P144-C154)												
S9B-T34-1230C	Pre-grouting & Guidewall for P147-P154	28	25	11-Feb-14 A	14-May-14	-276	Calendar Day					
S9B-T34-1270	Existing 450mm Stormwater Drain Diversion	21	21	17-Feb-14 A	17-May-14	-222	HK Working Day					
S9B-T34-1260B	Bored Pile Construction (PS30-PS32; 14d/pile; 1 Rig)	42	41	16-Apr-14 A	30-May-14	-100	Calendar Day					
S9B-T34-1250A	D-wall Construction along HHR slow lane (C130A-P131; 8d/Panel)	24	24	20-Apr-14	13-May-14	-368	Calendar Day					
S9B-T34-1250B	D-wall Construction along HHR slow lane (P144-P146; 8d/Panel)	24	24	20-Apr-14	13-May-14	-368	Calendar Day					
S9B-T34-1250C	D-wall Construction along HHR slow lane (P147-C154; 6d/Panel)	48	48	31-Jul-14	16-Sep-14	-353	Calendar Day					

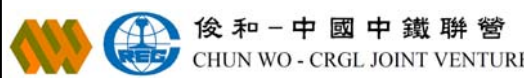


█	Remaining Work	█	Summary
█	Actual Work	█	Critical Remaining Work
█	Summary Bar	◆	Milestone

CEDD CONTRACT NO. HK/2009/02
Wan Chai Development Phase II - Central-Wan Chai Bypass at Wan Chai East (Contract 2)
3-MONTH ROLLING PROGRAMME (dd 20-Apr-14)

Date	Revision	Checked	Approved
20-Apr-14	3MRP		
20-Feb-14	Baseline Prog		

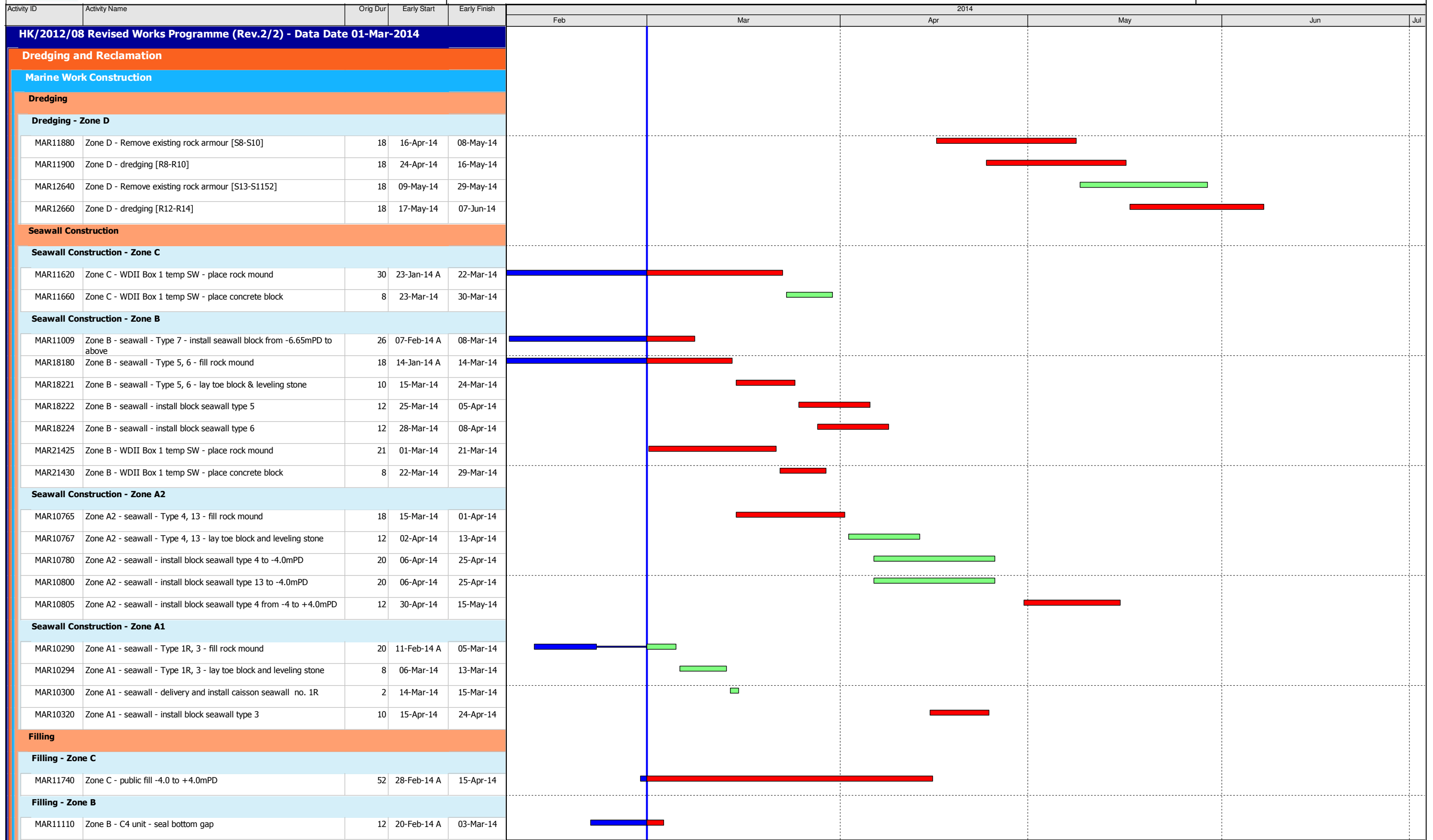
Activity ID	Activity Name	OD	RD	Start	Finish	Total Float	Calendar	2014						
								Apr 52	May 53	Jun 54	Jul 55	Aug 56		
Stage 3 - Northern Wall after TWCR4 Reclamation (C88-C105)														
S9B-T34-1410	Pre-drilling at TWCR4	186	102	11-Nov-13 A	30-Jul-14	-147	Calendar Day							
S9B-T34-1420C	Pre-grouting & Guide Wall Construction for P100-C105	21	14	19-Feb-14 A	03-May-14	-217	Calendar Day							
S9B-T34-1420B	Pre-grouting & Guide Wall Construction for C88-P96	28	28	28-Mar-14 A	17-May-14	-333	Calendar Day							
S9B-T34-1430A	D-wall Construction at TWCR4 (P97-P99; 8d/Panel)	24	24	14-May-14	06-Jun-14	-368	Calendar Day							
S9B-T34-1440F	Bored Pile Construction (PN27; 14d/pile)	14	14	31-May-14	13-Jun-14	-100	Calendar Day							
S9B-T34-1430B	D-wall Construction at TWCR4 (C88-P96; 6d/Panel)	54	54	07-Jun-14	30-Jul-14	-353	Calendar Day							
Temp Works for HHR Flyover Diversion (Stage 2)														
Bridge 1														
S9B-TTA-1000	Excavation & D-Wall Modification for Supporting Bridge 1	37	37	07-Jun-14	21-Jul-14	-294	Calendar Day							
S9B-TTA-1100	Overall Excavation to +1mPD	7	7	03-Jul-14	10-Jul-14	-295	HK Working Day							
S9B-TTA-1300	Installation of S1 Strut & Bracing	7	7	11-Jul-14	18-Jul-14	-295	HK Working Day							
S9B-TTA-1400	Installation of Bridge 1 spanning across CWB	3	3	19-Jul-14	21-Jul-14	-367	Calendar Day							
Bridge 2														
S9B-TTA-2000	D-Wall Modification for Supporting Bridge 2	14	14	14-May-14	29-May-14	-281	HK Working Day							
S9B-TTA-2100	Excavation & Installation of S1 Strut	12	12	30-May-14	13-Jun-14	-281	HK Working Day							
S9B-TTA-2200	Installation of Bridge 2 spanning across CWB	5	5	19-Jun-14	23-Jun-14	-356	Calendar Day							
Bridge 3														
S9B-TTA-3400	Steel Supporting Frame Erection for Bridge 3	30	30	28-Apr-14	04-Jun-14	-281	HK Working Day							
S9B-TTA-3500	Installation of Bridge 3 connecting with Existing HHR Flyover	14	14	05-Jun-14	18-Jun-14	-351	Calendar Day							
At-Grade Roadworks														
S9B-TTA-4150	Concrete Deck & Steel Deck on Existing Box Culvert O Bay 17 - Bay 19	35	35	22-Apr-14	04-Jun-14	-285	HK Working Day							
S9B-TTA-4100	At-Grade Temp Roadworks, Drainage & Furniture Installation in TWCR4 Area	45	45	07-Jun-14	30-Jul-14	-287	HK Working Day							
S9B-TTA-4200	Road Furniture Installation & Pavement Works on Bridge 3	30	30	19-Jun-14	24-Jul-14	-282	HK Working Day							
S9B-TTA-4000	Road Furniture Installation & Pavement Works on Bridge 2	30	30	24-Jun-14	29-Jul-14	-286	HK Working Day							
S9B-TTA-4300	Road Furniture Installation & Pavement Works on Bridge 1	15	15	22-Jul-14	07-Aug-14	-294	HK Working Day							
S9B-TTA-4400	Diversion of Traffic to Steel Bridges & TWCR4 (Stage 2 TTA)	0	0		07-Aug-14	-366	Calendar Day							
S9B-TTA-4500	Demolish of Approach Ramp of Existing HHR Flyover for D-Wall Construction	24	24	08-Aug-14	04-Sep-14	-294	HK Working Day							
S9B-TTA-4600	Utility Diversion for D-Wall near Existing HHR Flyover Approach Ramp	35	35	08-Aug-14	11-Sep-14	-347	Calendar Day							
Section 11 of the Works - Remainder of Works														
Marine Works at WCR2														
S11-R2-1600	Removal of Existing SHK Pump House M&E equipment	7	5	09-Apr-14 A	24-May-14	-405	Calendar Day							
S11-R2-1800B	Complete remaining reclamation at WCR2 (Stage 2) - Remaining at WCR2	30	30	25-Apr-14	24-May-14	-405	Calendar Day							
Marine Works at WCR3														
S11-R3-1100	Mobilisation of Dredger of 1st Stage Dredging	2	2	20-Apr-14	21-Apr-14	-300	Calendar Day							
S11-R3-1200	Advanced Dredging at Permanent Seawall Area by Night Work (20,200m3 @ 250m3/d)	80	80	22-Apr-14	10-Jul-14	-300	Calendar Day							
S11-R3-1300	Advanced Rockfilling for Seawall by Night Work (24,000m3 @ 500m3/d)	48	48	11-Jul-14	04-Sep-14	-237	HK Working Day							
Demolition Works														
S11-DEMO-1200	Advanced Works - Cutting Electricity Supply to existing WSD SWPS to HEC	42	42	20-Apr-14	31-May-14	-412	Calendar Day							
Soft Landscaping & Establishment Works														
Section 8C of the Works - Landscape Softworks in Area 8														
S8C-0010	Carry out landscape soft work on new ferry pier	90	90	20-Apr-14	18-Jul-14	-158	Calendar Day							
Section 8D of the Works - Establishment Works in Area 8														
S8D-0010	Carry out establishment work on new ferry pier	365	365	19-Jul-14	18-Jul-15	-158	Calendar Day							
Section 12 of the Works - Protection and Preservation of Existing Trees														
S12-0010	Protection and preservation of existing trees	2375	861	24-Feb-10 A	27-Aug-16	0	Calendar Day							
SUMMARY PROGRAMME														
CWB Tunnel Construction & Remaining Works (Section 9A, 9B, 10 & 11)														
CWB Tunnel Works in WCR1														
SUM-CWB-14000	Backfilling for Tunnel Portion 1	97	97	20-May-14	24-Aug-14	-869	Calendar Day							
CWB Tunnel Works in WCR2														
SUM-CWB-20000	Reclamation at WCR2	224	35	25-Jul-12 A	24-May-14	-405	Calendar Day							
SUM-CWB-21000	Foundation for Tunnel Portion 2	366	41	27-Dec-12 A	30-May-14	61	Calendar Day							
SUM-CWB-22000	Pump Test & Excavation for Tunnel Portion 2	190	190	31-May-14	06-Dec-14	52	Calendar Day							
CWB Tunnel Works in WCR3														
SUM-CWB-30000	Reclamation at WCR3 & Ferry Pier Demolition (Except Water Channel Maintained for HK/2009/01)	435	435	22-Apr-14	30-Jun-15	-413	Calendar Day							
CWB Tunnel Works in WCR4/TWCR4														
SUM-CWB-41000B	Foundation for Tunnel Portion 3&4 (except Eastern Bulkhead Wall)	457	321	11-Nov-13 A	06-Mar-15	-330	Calendar Day							
Reprovisioning of Existing Facilities (Section 3, 4A, 4B, 4C, 5, 6, 7, 8A & 8B)														
Reprovisioning of Box Culvert N (Section 7)														
SUM-FAC-52000	VO116 - New Transformer Building to Ferry Pier	249	249	11-Aug-14	16-Apr-15	-1074	Calendar Day							
Reprovisioning of Wan Chai Ferry Pier & Covered Walkway (Section 8A & 8B)														
SUM-FAC-62000	Ferry Pier ABWF Works	155	10	17-Dec-12 A	29-Apr-14	-19	Calendar Day							
SUM-FAC-65000	ABWF Works on Observation Deck under Section 8B	150	45	07-May-13 A	03-Jun-14	-144	Calendar Day							
SUM-FAC-66000	Temp Covered Walkway	217	179	10-Aug-13 A	15-Oct-14	-418	Calendar Day							



■ Remaining Work ■ Summary Bar
■ Actual Work ■ Critical Remaining Work
■ Summary Bar
■ Critical Remaining Work
◆ Milestone

CEDD CONTRACT NO. HK/2009/02
Wan Chai Development Phase II - Central-Wan Chai Bypass at Wan Chai East (Contract 2)
3-MONTH ROLLING PROGRAMME (dd 20-Apr-14)

Date	Revision	Checked	Approved
20-Apr-14	3MRP		
20-Feb-14	Baseline Prog		



Data Date: 01-Mar-14

- ◆ Current Milestone
- Actual Work
- Critical Remaining Work
- Remaining Work
- Remaining Level of Effort

3-Month Rolling Programme for Works outside CRIII Area
(Mar 2014 to May 2014)

Date	Revision	Checked	Approved
01-Mar-14	Rev. 2		



Activity ID	Activity Name	Orig Dur	Early Start	Early Finish	2014						
					Feb	Mar	Apr	May	Jun	Jul	
MVB Substructure - Diaphragm Wall and Sheetpile Wall											
SII10425	Sec II - MVB - Set up predrill rigs and preparation for predrilling	6	03-Mar-14	08-Mar-14		■					
SII10430	Sec II - MVB - D-wall construction preparation and silo setup	44	08-Mar-14	20-Apr-14		■	■				
SII10440	Sec II - MVB - predrilling and ground pretreatment for Dwall	102	05-Mar-14	10-Jul-14		■	■	■	■	■	
SII10460	Sec II - MVB A - construct guide wall [P1-P13, P33-P41]	150	21-Mar-14	22-Sep-14			■	■	■	■	
SII10480	Sec II - MVB A - construct Dwall [P1-P13, P33-P41] (1.5m thk on rock)	150	21-Apr-14	20-Oct-14				■	■	■	
SII10520	Sec II - MVB B - construct guide wall [P14-P32]	66	18-Mar-14	10-Jun-14		■	■	■	■	■	
SII10540	Sec II - MVB B - construct Dwall [P14-P32] (1.5m thk on rock)	150	21-Apr-14	20-Oct-14				■	■	■	
Section II A - CWB Tunnel & Slip Road Structures and Facilities											
Section II A - CWB Tunnel - Design, Submission and Approval											
SIIA10460	CWB Tunnel - MS for DWall Construction - Eng comment & approve	28	16-Jan-14 A	06-Mar-14	■	■					
CWB A2 & B											
CWB A2 & B - Dwall Construction											
SIIA11460	Sec II A - CWB B: Predrilling for Dwall & piles	78	29-Mar-14	07-Jul-14				■	■	■	
SIIA11480	Sec II A - CWB B: Ground treatment	120	17-Apr-14	08-Sep-14				■	■	■	
SIIA11500	Sec II A - CWB B: construct Guide Wall	60	22-Apr-14	04-Jul-14				■	■	■	
SIIA11520	Sec II A - CWB B: construct DWall and barrette (1.2m thk on rock)	96	17-May-14	08-Sep-14				■	■	■	
SIIA13340	Sec II A - CWB A2(1): Predrilling for Dwall & piles	50	16-May-14	15-Jul-14				■	■	■	
SIIA13360	Sec II A - CWB A2(1): ground pretreatment	46	16-May-14	10-Jul-14				■	■	■	
SIIA13380	Sec II A - CWB A2(1): Guide Wall	50	16-May-14	15-Jul-14				■	■	■	
Section VI B - Area 8											
Area 8 - Demolish Ex. Cooling Water Pumping Station											
SVIB10000	MS of cooling water pump station demolition Works - prepare and submit	60	03-Dec-13 A	26-Mar-14	■	■					
SVIB10020	MS of cooling water pump station demolition - ICE check and issue check cert	14	27-Mar-14	16-Apr-14			■	■			
SVIB10040	MS of cooling water pump station demolition Works - Eng comment and approve	28	27-Mar-14	23-Apr-14			■	■			
SVIB10070	Sec VI B - site clearance, u/g utilities detection	12	16-Apr-14	29-Apr-14				■	■		
SVIB10080	Sec VI B - demolish existing air duct	30	30-Apr-14	06-Jun-14					■	■	
Section VI C - Area 3, 6, 8A & 8C											
Area 8A & 8C - Seawall Modification (Reviewed)											
Design Submission & Approval											
PRS-1000	Sec VI C - Temp Work Design for Seawall Modification - Prepare and submit to ICE	90	20-Nov-13 A	15-Mar-14	■	■					
PRS-1002	Sec VI C - Temp Work Design for Seawall Modification & MTR Pump Room Stabilization - ICE check and issue check cert.	14	17-Mar-14	01-Apr-14			■	■			
PRS-1004	Sec VI C - Temp Work Design for Seawall Modification & MTR Pump Room Stabilization - Engineer / MTR comment and approve	28	17-Mar-14	22-Apr-14			■	■			
Tenders for Sub-contractor and Procurement											
Sub11040	Sec VI C - Prepare Sub-contract for Seawall Modification and Procurement of Materials	90	23-Apr-14	09-Aug-14				■	■	■	
Section VI D - Area 8B & 10											
WDII Box 1 Construction (Reviewed)											
WDII Box 1 Submission and Approval / Material Procurement											
S0721020	Sec VI D - WD II Box 1 - temp work design - prepare and submit	180	03-Jul-13 A	23-Apr-14	■	■	■	■	■	■	
S0721040	Sec VI D - WD II Box 1 - temp work design - ICE check and issue check cert	28	24-Apr-14	21-May-14				■	■		
S0721060	Sec VI D - WD II Box 1 - temp work design - Engineer comment and approve	28	22-May-14	18-Jun-14					■	■	



Activity ID	Activity Name	Orig Dur	Early Start	Early Finish	2014						
					Feb	Mar	Apr	May	Jun	Jul	
Section VIII - Landscape Softworks											
Soft Landscaping Works											
SVIII10020	Sec VIII - Tree Felling/Transplanting at Portion 2 & 2A	90	20-Nov-13 A	12-Jun-14							
Section X - Protection & Preservation of Trees											
Soft Landscaping Works											
SX10020	Sec X - Protection & Preservation of Trees	1632	31-Jan-13 A	20-Jul-17							

Activity Name	Duration (cal days)	Start	Finish	Total Float	2011		2012		2013		2014		2015		2016	
					Q1	Q2	Q3	Q4	Q1	Q2	Q3	Q4	Q1	Q2	Q3	Q4
HY/2009/15 - Works Programme Rev. K (DD:20-Feb-14) 1st Submission																
Works in East Ventilation Adit - Based on Alternative Method																
EAST VENTILATION ADIT - SUMMARY	774d	08-May-12 A	20-Jun-14	14d												
Works in TS1 Area (Portion 13A, 13B) & CCT at Portion 1,2,4,6,22																
TS1 - Temporary Reclamation																
TS1 - TEMPORARY RECLAMATION SUMMARY	127d	07-Jan-11 A	13-May-11 A													
TS1 - Diaphragm Wall																
TS1 DIAPHRAGM WALL & PUMP TEST SUMMARY	235d	19-May-11 A	30-Dec-11 A													
TS1 - ELS Works																
TS1 ELS SUMMARY	103d	05-Jan-12 A	16-Apr-12 A													
TS1-CCT RC Structure																
TS1 CCT - SUMMARY	100d	12-Jan-12 A	19-Jun-12 A													
EV Adit at Portion 1,2,6,22																
EVA AT PORTION 1 & 2	27d	13-Jun-12 A	17-Jul-12 A													
TS1 - Removal of Temp. Reclamation																
TS1 - REMOVAL OF TEMP. RECLAMATION SUMMARY	133d	04-Jun-12 A	15-Oct-12 A													
Removal of Temp. Reclamation																
DURATION OF TEMP. RECLAMATION TS1W (MAX=391D)	604d	25-Jan-11 A	20-Sep-12 A													
DURATION OF TEMP. RECLAMATION TS1E (EXCLUDING TS1W) (MAX=90D)	557d	13-Mar-11 A	20-Sep-12 A													
Works in TS2 Area (Portion 13A, 13B)																
TS2 - Temporary Reclamation																
TS2 - TEMPORARY RECLAMATION SUMMARY	430d	16-Apr-12 A	20-Jun-13 A													
TS2 - Diaphragm Wall																
TS2 - DIAPHRAGM WALL SUMMARY	281d	21-Nov-12 A	28-Aug-13 A													
TS2 - ELS Works																
TS2 ELS SUMMARY	87d	17-Sep-13 A	13-Dec-13 A													
TS2 - CCT RC Structure																
TS2 - CCT SUMMARY	123d	23-Nov-13 A	25-Mar-14	-59d												
TS2 - Removal of Temp. Reclamation																
TS2 - REMOVAL OF TEMP. RECLAMATION SUMMARY	82d	11-Mar-14	31-May-14	-129d												
Removal of Temp. Reclamation																
DURATION OF TEMP. RECLAMATION TS2 (MAX= 595D)	1233d	15-Jan-11 A	31-May-14	-122d												
DURATION OF TEMP. RECLAMATION TZ1 (MAX= 990D)	1223d	25-Jan-11 A	31-May-14	-122d												
Works in TS1/TS2 - Cable Trough/Maintenance Walkway																
TS2 CABLE TROUGH SUMMARY	218d	06-Jan-14 A	11-Aug-14	-35d												
Works in TS4/ME4 Area (Portion 14A, 14B, 15, 23)																
TS4 + ME4 (TS4+ & TZ6) Temporary Reclamation																
TS4 - TEMPORARY RECLAMATION SUMMARY	364d	20-Jan-11 A	16-Apr-12 A													
TS4ME4 - Diaphragm Wall																
DIAPHRAGM WALL SUMMARY	310d	23-Dec-11 A	27-Oct-12 A													
TS4ME4 - ELS Works & Rock Excavation																
TS4 - ELS + ROCK EXCAVATION SUMMARY	378d	10-Oct-12 A	22-Oct-13 A													
TS4ME4 - Mined Tunnel East Portal Works																
MT EAST PORTAL WORKS SUMMARY	201d	16-Aug-13 A	13-Mar-14	-205d												
TS4ME4 - CCT RC Structure																
TS4ME4 - CWB CCT SUMMARY	310d	20-May-13 A	09-Apr-14	-205d												
TS4ME4 - SCL CCT SUMMARY	125d	20-Dec-13 A	04-May-14	-205d												
TS4ME4 - Removal of Temporary Reclamation																
DURATION OF TEMP. RECLAMATION TS4 (MAX=1029D)	1159d	28-Apr-11 A	29-Jun-14	-218d												
REMOVAL OF TEMP. RECLAMATION SUMMARY	64d	28-Apr-14	30-Jun-14	-218d												
Re-Provision of Permanent Jetty/ Floating Pontoon																
RE-PROVISION OF PERMANENT JETTY	150d	20-Feb-14	22-Aug-14	414d												
CHT Protection Works at Location A,B,C																
ADMS Installation																
ADMS INSTALLATION - SUMMARY	74d	01-Feb-11 A	15-Apr-11 A													
Standby Dewatering System(CSD: Grout Curtain Cut-off Wall Scheme)																
STANDBY DEWATERING SYSTEM - SUMMARY	452d	19-Apr-11 A	13-Jul-12 A													
VO.NO. 9 - Steel Weights & Aluminum Cladding Inside CHT																
VO No. 8 & 14 - STEEL WEIGHTS & CLADDING SUMMARY	378d	20-Aug-11 A	31-Aug-12 A													
Works in TPCWAE Area (Portion 20A, 20B)																
TPCWAE - Temporary Reclamation																
TPCWAE - TEMPORARY RECLAMATION SUMMARY	143d	08-Dec-10 A	07-Jun-11 A													
TPCWAE - Diaphragm Wall																
DIAPHRAGM WALL & PUMP TEST SUMMARY	252d	13-Jun-11 A	30-Jan-12 A													
TPCWAE - ELS Works & Soft Excavation																
TPCWAE - ELS SUMMARY (EXCEPT ROCK EXCAVATION)	240d	17-Jan-12 A	12-Sep-12 A													
TPCWAE - Rock Excavation																
TPCWAE - ROCK EXCAVATION SUMMARY	276d	19-Jun-12 A	05-Apr-13 A													
MT West Portal Works																
MT WEST PORTAL WORKS SUMMARY	375d	08-Nov-12 A	04-Dec-13 A													
CCT RC Structure																
CCT - AREA A	359d	24-Jan-13 A	18-Mar-14	-127d												
CCT - AREA B, STITCHING AREA	111d	27-Nov-13 A	23-Mar-14	-127d												
Removal of Temporary Reclamation																
REMOVAL OF RECLAMATION SUMMARY	43d	15-Mar-14	30-Apr-14	-143d												
Works in TPCWAW Area																
TPCWAW - Temporary Reclamation																
TPCWAW - TEMPORARY RECLAMATION SUMMARY	86d	02-May-14	26-Jul-14	0d												
TPCWAW - Diaphragm Wall																
Diaphragm Wall & Pump Test Summary	193d	27-Jul-14	04-Feb-15	0d												
TPCWAW - ELS Works																
TPCWAW - ELS SUMMARY (EXCEPT ROCK EXCAVATION)	88d	06-Feb-15	04-May-15	0d												
TPCWAW - ROCK EXCAVATION																
TPCWAW - ROCK EXCAVATION SUMMARY	104d	29-Apr-15	10-Aug-15	1d												
TPCWAW - CCT RC Structure																
TPCWAW - CCT SUMMARY	94d	24-Jul-15	25-Oct-15	0d												
TPCWAW - Removal of Temporary Reclamation																
DURATION OF TEMP. RECLAMATION TZ2 (MAX=1668D)	1812d	11-Feb-11 A	27-Jan-16	0d												
DURATION OF TEMP. RECLAMATION TPCWAW (MAX=816D)	629d	09-May-14	27-Jan-16	0d												
REMOVAL OF TEMP. RECLAMATION SUMMARY	59d	18-Oct-15	27-Jan-16	0d												
Works for Mined Tunnel (Portion 16, 17, 18)																
(SR8) Slip Road 9 Tunnel, Total L = 167m, less 13m at WP and less 5m at EP= 149m Tunnel Excav																
SR8 - MINED TUNNEL WORKS SUMMARY	515d	19-Oct-13 A	17-Mar-15	230d												
(EB) East Bound Tunnel, L = 167m, less 7m at WP and less 1.5m at EP= 158.5m Tunnel Excav																
EB - MINED TUNNEL WORKS SUMMARY	745d	19-Oct-13 A	02-Nov-15	0d												
(WB) West Bound Tunnel, L = 153m, less 7m at WP and less 1.5m at EP= 144.5m Tunnel Excav																
WB - MINED TUNNEL WORKS SUMMARY	745d	19-Oct-13 A	02-Nov-15	0d												

Actual Level of Effort
 Remaining Level of Effort
 Milestone

China State Construction Engineering (HK) Ltd :

HY/2009/15 - CWB Tunnel(CBTS)

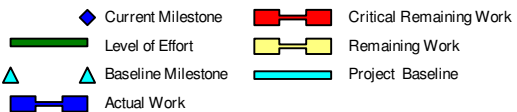
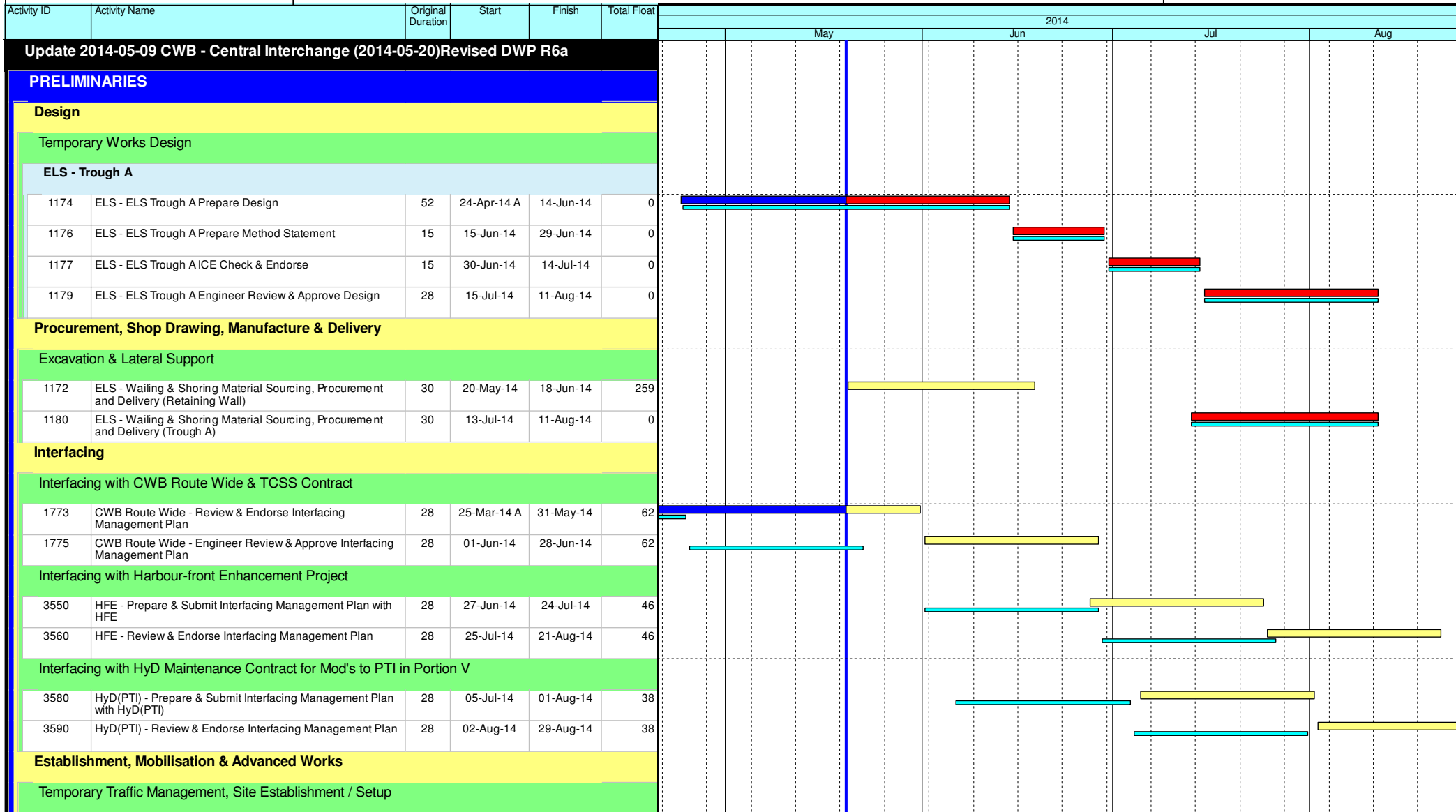
EXECUTIVE SUMMARY PROGRAMME

Prepared by William Caluza			
Date	Revision	Checked	Approved
20-Feb-14	Executive Summary Progra...	GC	KC

Data Date: 20-May-14

HY/2009/18 Central - Wan Chai Bypass (Central Interchange)

TASK filters: 3 Months_1, Not HL.



Leighton Contractors (Asia) Limited Programme Update 44 (May 2014) THREE MONTH ROLLING

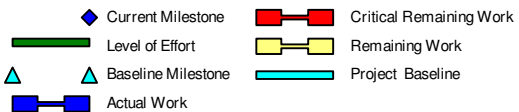
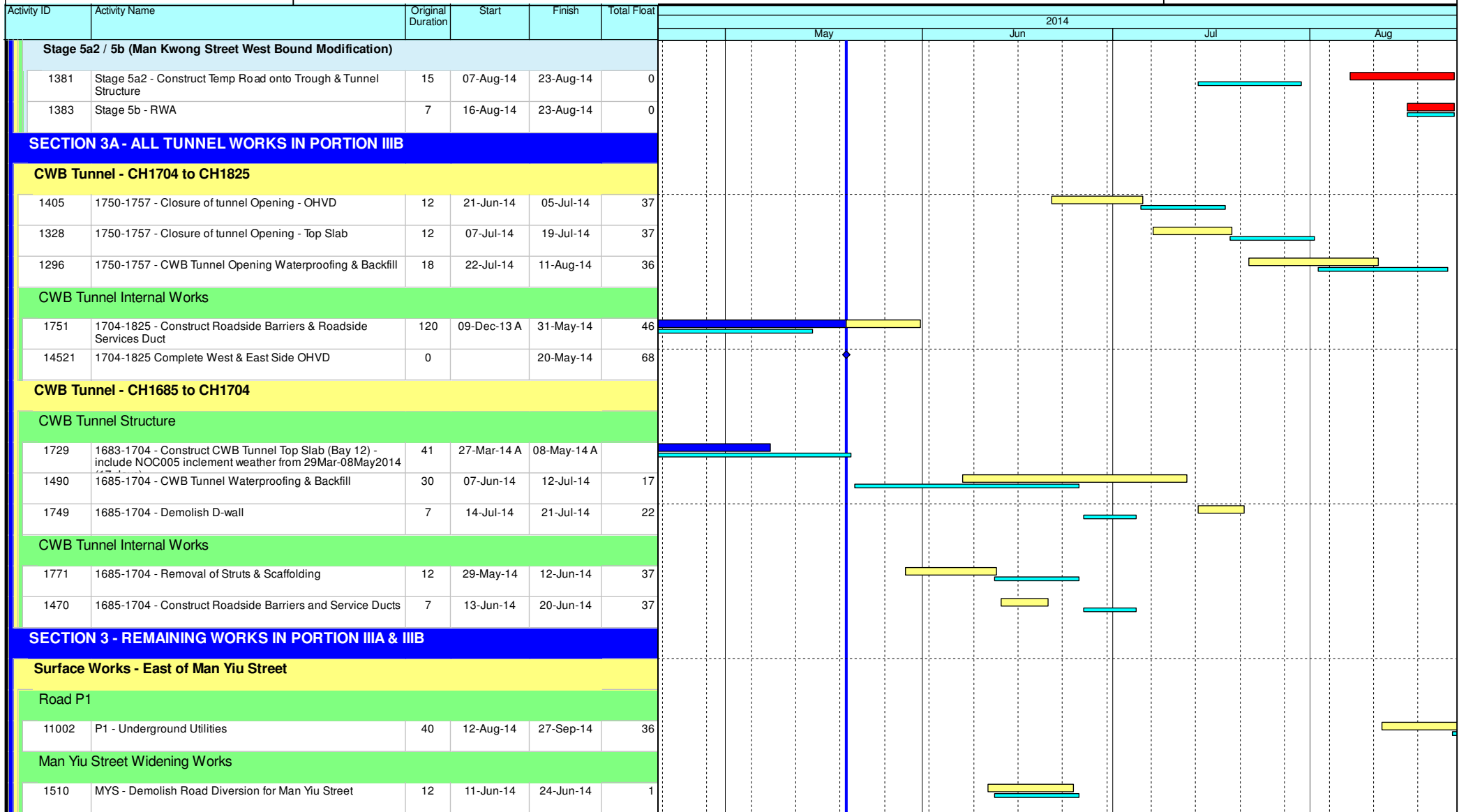
Project ID: U044
Baseline: DCP7-2b
Layout: Update Three Month Rolling U044
Page 1 of 8

Date	Revision	Checked	Appro...
20-May-14	U044	AT	DS

Data Date: 20-May-14

HY/2009/18 Central - Wan Chai Bypass (Central Interchange)

TASK filters: 3 Months_1, Not HL.



Leighton Contractors (Asia) Limited Programme Update 44 (May 2014) THREE MONTH ROLLING

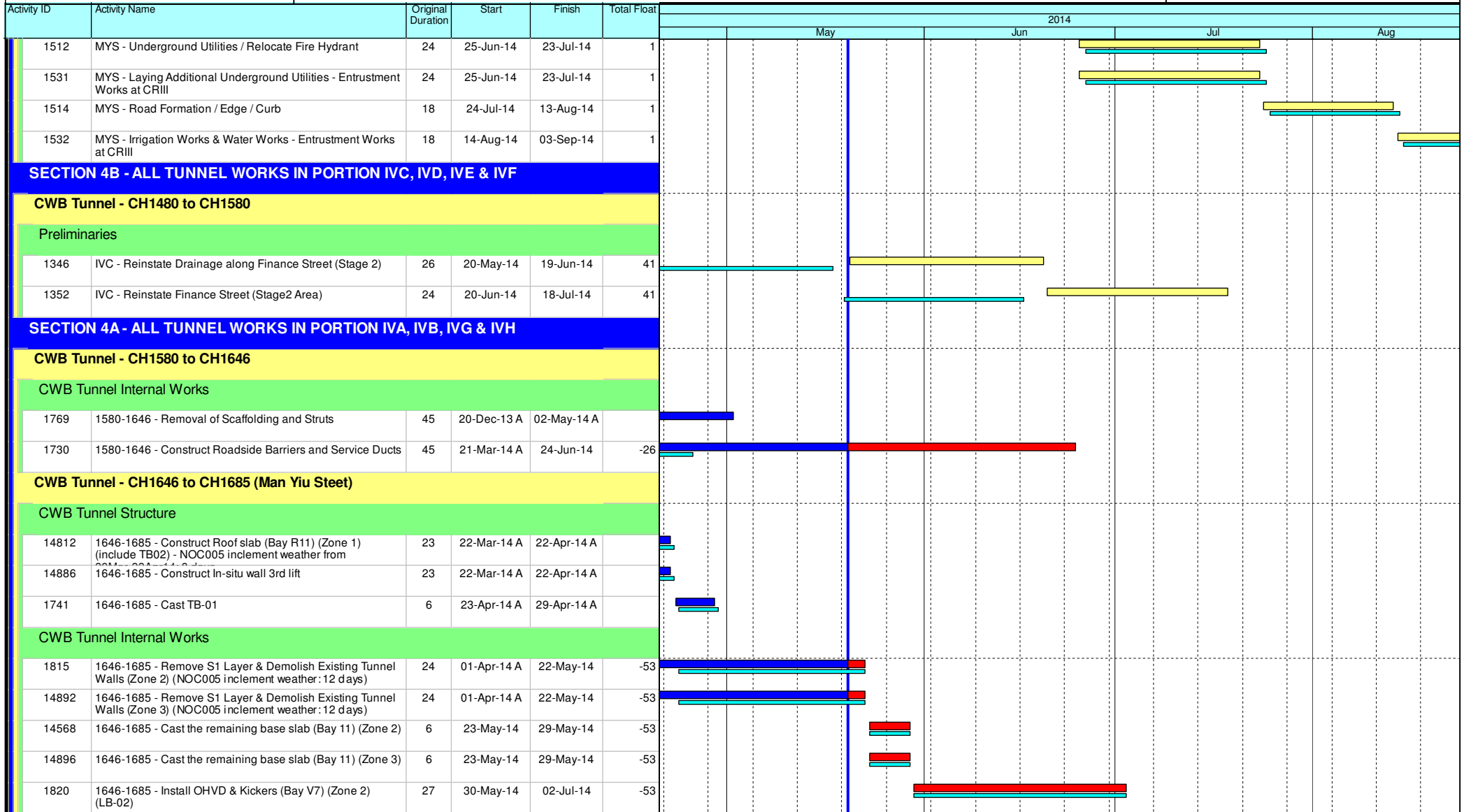
Project ID: U044
Baseline: DCP7-2b
Layout: Update Three Month Rolling U044
Page 2 of 8

Date	Revision	Checked	Appro...
20-May-14	U044	AT	DS

Data Date: 20-May-14

HY/2009/18 Central - Wan Chai Bypass (Central Interchange)

TASK filters: 3 Months_1, Not HL.



- ◆ Current Milestone
- Critical Remaining Work
- Level of Effort
- Remaining Work
- ▲ Baseline Milestone
- Project Baseline
- Actual Work

Leighton Contractors (Asia) Limited Programme Update 44 (May 2014) THREE MONTH ROLLING

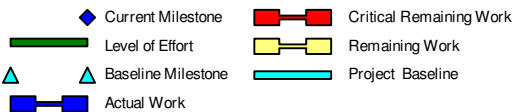
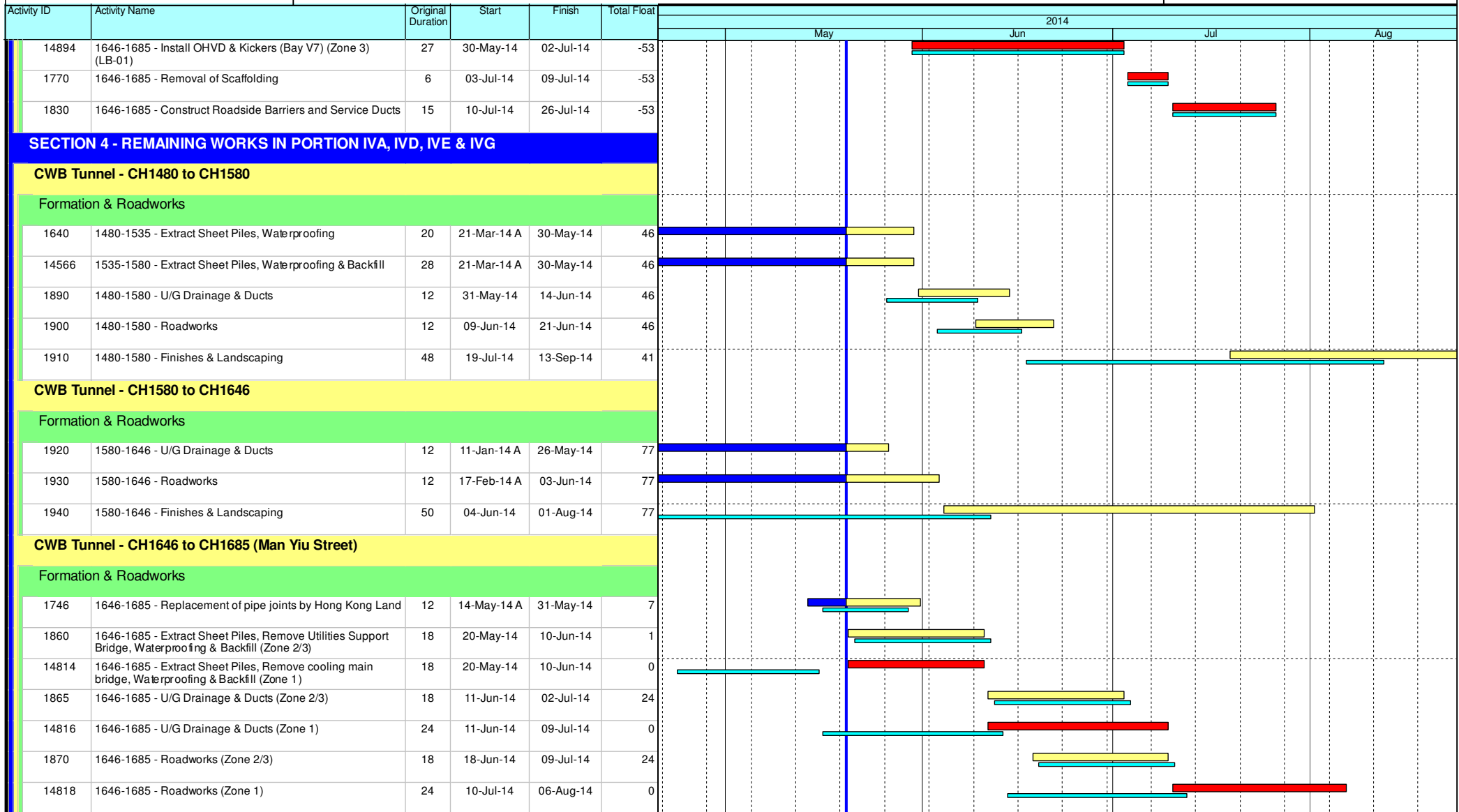
Project ID: U044
 Baseline: DCP7-2b
 Layout: Update Three Month Rolling U044
 Page 3 of 8

Date	Revision	Checked	Appro...
20-May-14	U044	AT	DS

Data Date: 20-May-14

HY/2009/18 Central - Wan Chai Bypass (Central Interchange)

TASK filters: 3 Months_1, Not HL.



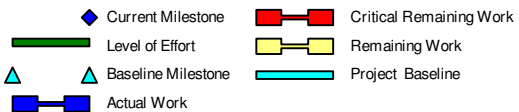
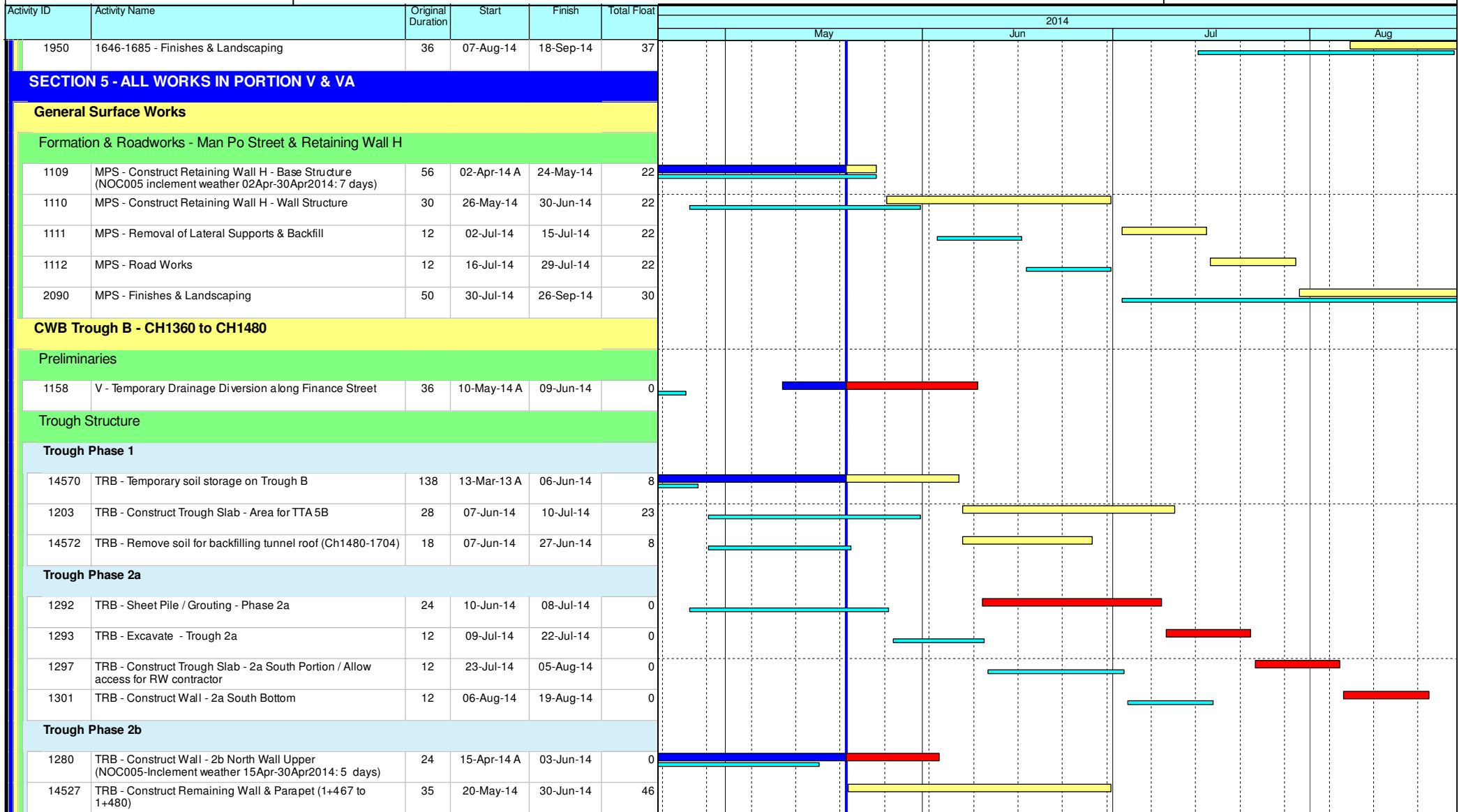
Leighton Contractors (Asia) Limited Programme Update 44 (May 2014) THREE MONTH ROLLING

Project ID: U044
 Baseline: DCP7-2b
 Layout: Update Three Month Rolling U044
 Page 4 of 8

Date	Revision	Checked	Appro...
20-May-14	U044	AT	DS

HY/2009/18 Central - Wan Chai Bypass (Central Interchange)

TASK filters: 3 Months_1, Not HL.



Leighton Contractors (Asia) Limited Programme Update 44 (May 2014) THREE MONTH ROLLING

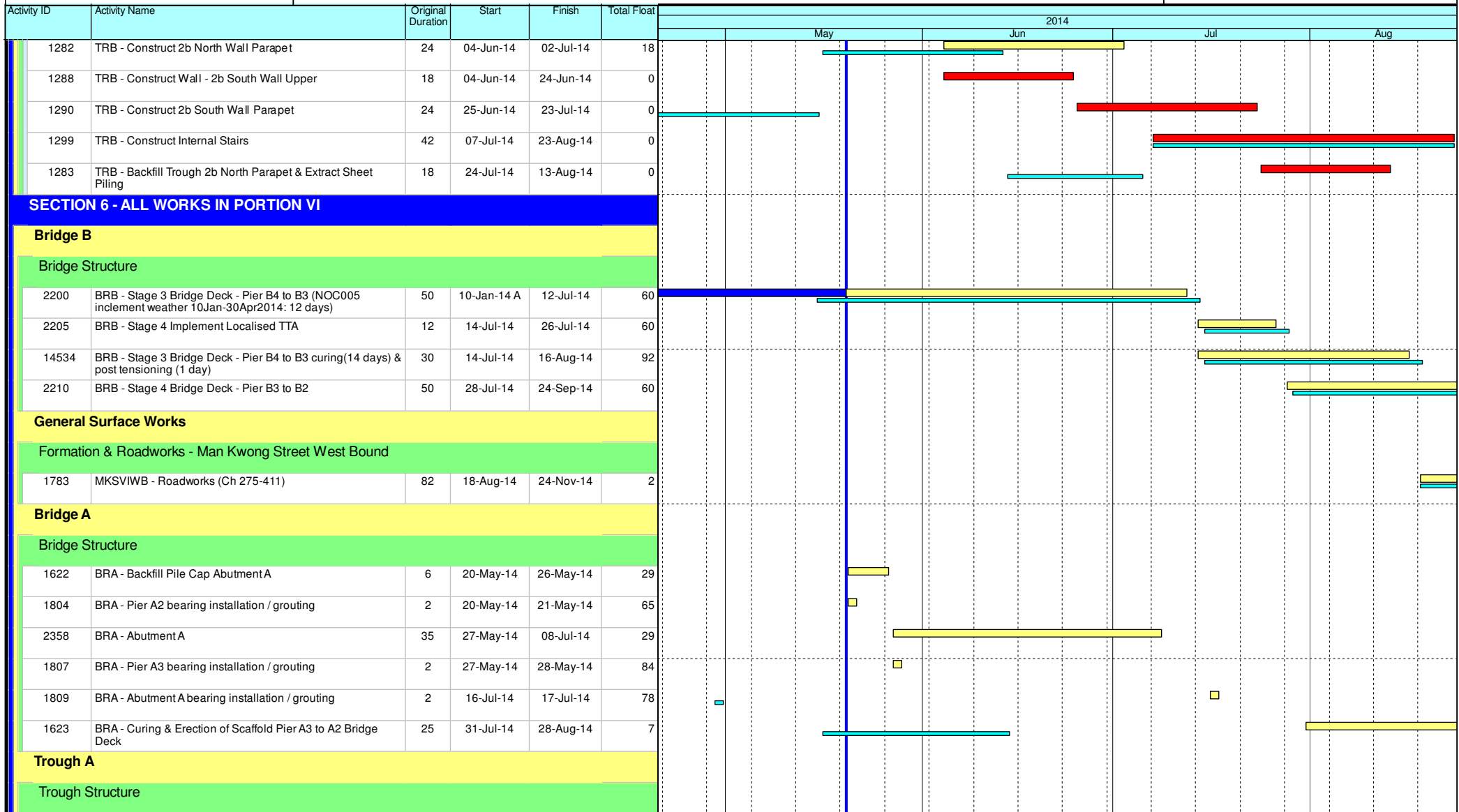
Project ID: U044
Baseline: DCP7-2b
Layout: Update Three Month Rolling U044
Page 5 of 8

Date	Revision	Checked	Appro...
20-May-14	U044	AT	DS

Data Date: 20-May-14

HY/2009/18 Central - Wan Chai Bypass (Central Interchange)

TASK filters: 3 Months_1, Not HL.



- Current Milestone
- Critical Remaining Work
- Level of Effort
- Remaining Work
- Baseline Milestone
- Project Baseline
- Actual Work

Leighton Contractors (Asia) Limited Programme Update 44 (May 2014) THREE MONTH ROLLING

Project ID: U044
 Baseline: DCP7-2b
 Layout: Update Three Month Rolling U044
 Page 6 of 8

Date	Revision	Checked	Appro...
20-May-14	U044	AT	DS

Data Date: 20-May-14

HY/2009/18 Central - Wan Chai Bypass (Central Interchange)

TASK filters: 3 Months_1, Not HL.

Activity ID	Activity Name	Original Duration	Start	Finish	Total Float	2014											
						May			Jun			Jul			Aug		
1202	TRA - Excavate & Lateral Support (West) - Section 1 & 2	18	12-Aug-14	01-Sep-14	0												
Elevated Layby at Rumsey Street Flyover East Bound																	
Bridge Structure																	
2760	RSFLB - Pier E1/E2 Columns (NOC005 inclement weather 04Dec2013-30Apr2014: 15 days)	70	04-Dec-13 A	03-Jun-14	386												
2770	RSFLB - Pier E1/E2 Bridge Deck	36	04-Jun-14	16-Jul-14	386												
2780	RSFLB - Construct Parapet	18	17-Jul-14	06-Aug-14	386												
2790	RSFLB - 30-day Waiting Period Before Constructing Stitch	25	07-Aug-14	04-Sep-14	386												
INTERFACING WORKS																	
Interfacing with CWB(RW)																	
4215	INT - Section 3B - Joint Inspection & Handover to CWB(RW)	14	27-Jan-14 A	20-May-14	-81												
4230	INT - Section 3A - Joint Inspection & Handover to CWB(RW)	14	22-Jul-14	04-Aug-14	25												
4210	INT - Section 4A - Joint Inspection & Handover to CWB(RW)	14	27-Jul-14	09-Aug-14	-50												
Key Dates for Completion of Sections																	
Anticipated Completion																	
1054	KD4 - Anticipated Completion	0		12-Jul-14*	20												
1044	KD7 - Anticipated Completion	0		26-Jul-14*	-64												
Contract Required Completion																	
1045	KD7 - Section 4A Complete (DAY-1341)	0		23-May-14*	0												
1055	KD4 - Section 3A Complete (DAY-1411)	0		01-Aug-14*	0												
Portion Handover Dates																	
Anticipated Handover																	
2910	Portion IIIC Handover (KD5 + 28 days)	0		20-May-14*	-81												
2925	Portion IIIB Handover (KD4 + 28 days)	0		09-Aug-14*	20												
Contract Required Handover																	
3020	Portion IIIC Handover (KD5 + 28 days)	0		20-May-14*	-80												

- Current Milestone
- Critical Remaining Work
- Level of Effort
- Remaining Work
- Baseline Milestone
- Project Baseline
- Actual Work

Leighton Contractors (Asia) Limited Programme Update 44 (May 2014) THREE MONTH ROLLING

Project ID: U044
Baseline: DCP7-2b
Layout: Update Three Month Rolling U044
Page 7 of 8








Date	Revision	Checked	Appro...
20-May-14	U044	AT	DS

Data Date: 20-May-14

HY/2009/18 Central - Wan Chai Bypass (Central Interchange)

TASK filters: 3 Months_1, Not HL.

Activity ID	Activity Name	Original Duration	Start	Finish	Total Float	2014											
						May			Jun			Jul			Aug		
						1	2	3	1	2	3	1	2	3	1	2	3
3025	Portion IVB Handover (KD7 + 28 days)	0		20-Jun-14*	0												
3010	Portion IVH Handover (KD7 + 28 days)	0		20-Jun-14*	0												

-  Current Milestone
-  Critical Remaining Work
-  Level of Effort
-  Remaining Work
-  Baseline Milestone
-  Project Baseline
-  Actual Work

Leighton Contractors (Asia) Limited Programme Update 44 (May 2014) THREE MONTH ROLLING

Project ID: U044
 Baseline: DCP7-2b
 Layout: Update Three Month Rolling U044
 Page 8 of 8

Date	Revision	Checked	Appro...
20-May-14	U044	AT	DS

Activity ID	Activity Name	Rem Dur	Start	Finish	2014																							
					May						June						July						August					
					21	28	05	12	19	26	02	09	16	23	30	07	14	21	28	04	11	18						
3MRP - May 2014 to Aug 2014																												
02 - PRE-CONSTRUCTION WORKS																												
02.2 - Contractor's Submission																												
0220-1560	Noise Enclosure/Barrier - Steel Material Submission	0	02-Jan-14 A	28-Apr-14 A	Noise Enclosure/Barrier - Steel Material Submission																							
0220-1570	Noise Enclosure/Barrier - Steel Material Comment/Resubmission	6	12-Feb-14 A	25-May-14	Noise Enclosure/Barrier - Steel Material Comment/Resubmission																							
0220-1580	Noise Enclosure/Barrier - Steel Material No Adverse Comment	6	26-May-14	31-May-14	Noise Enclosure/Barrier - Steel Material No Adverse Comment																							
02.3 - Method Statement / Shop Drawings																												
0230-1580	MS Bridge F1A/F2A Int. Noise Semi Enclosure - Submission	6	01-Apr-14 A	25-May-14	MS Bridge F1A/F2A Int. Noise Semi Enclosure - Submission																							
0230-1590	MS Bridge F1A/F2A Int. Noise Semi Enclosure - ER Review / Comment	6	26-May-14	31-May-14	MS Bridge F1A/F2A Int. Noise Semi Enclosure - ER Review / Comment																							
0230-1600	MS Bridge F1A/F2A Int. Noise Semi Enclosure - Resubmission	6	01-Jun-14	06-Jun-14	MS Bridge F1A/F2A Int. Noise Semi Enclosure - Resubmission																							
0230-1610	MS Bridge F1A/F2A Int. Noise Semi Enclosure - No Adverse Comment	15	07-Jun-14	21-Jun-14	MS Bridge F1A/F2A Int. Noise Semi Enclosure - No Adverse Comment																							
0230-1960	MS Beam Erection D1 to E2 - No Adverse Comment	0	15-Apr-14 A	25-Apr-14 A	MS Beam Erection D1 to E2 - No Adverse Comment																							
0230-2050	MS Beam Erection F8 to F15 - Resubmission	0	19-Feb-14 A	28-Apr-14 A	MS Beam Erection F8 to F15 - Resubmission																							
0230-2060	MS Beam Erection F8 to F15 - No Adverse Comment	0	29-Apr-14 A	13-May-14 A	MS Beam Erection F8 to F15 - No Adverse Comment																							
0230-1420	MS Permanent Noise Barrier Cantilever - Submission	6	10-Feb-14 A	25-May-14	MS Permanent Noise Barrier Cantilever - Submission																							
0230-1430	MS Permanent Noise Barrier Cantilever - ER Review & Comment	15	26-May-14	09-Jun-14	MS Permanent Noise Barrier Cantilever - ER Review & Comment																							
0230-1440	MS Permanent Noise Barrier Cantilever - Resubmission	15	10-Jun-14	24-Jun-14	MS Permanent Noise Barrier Cantilever - Resubmission																							
0230-1450	MS Permanent Noise Barrier Cantilever - No Adverse Comment	15	25-Jun-14	09-Jul-14	MS Permanent Noise Barrier Cantilever - No Adverse Comment																							
0230-1790	MS Temporary Bridge TD - ER Review & Comment	0	20-Mar-14 A	25-Apr-14 A	MS Temporary Bridge TD - ER Review & Comment																							
0230-1800	MS Temporary Bridge TD - Resubmission	0	01-Apr-14 A	25-Apr-14 A	MS Temporary Bridge TD - Resubmission																							
0230-1810	MS Temporary Bridge TD - No Adverse Comment	0	14-Apr-14 A	01-May-14 A	MS Temporary Bridge TD - No Adverse Comment																							
0230-1820	MS Bridge Demolition Pier E3 to P20 - Submission	24	01-Jun-14*	24-Jun-14	MS Bridge Demolition Pier E3 to P20 - Submission																							
0230-1830	MS Bridge Demolition Pier E3 to P20 - ER Review & Comment	15	25-Jun-14	09-Jul-14	MS Bridge Demolition Pier E3 to P20 - ER Review & Comment																							
0230-1840	MS Bridge Demolition Pier E3 to P20 - Resubmission	15	10-Jul-14	24-Jul-14	MS Bridge Demolition Pier E3 to P20 - Resubmission																							
0230-1850	MS Bridge Demolition Pier E3 to P20 - No Adverse Comment	18	25-Jul-14	11-Aug-14	MS Bridge Demolition Pier E3 to P20 - No Adverse Comment																							
0230-1740	MS Temporary Bridge TB & TC - Submission	28	01-Aug-14*	28-Aug-14	MS Temporary Bridge TB & TC - Submission																							
02.4 - Contractor's Design and Build Items																												
0240-1044	Temp Bridge "TD" Design - No Adverse Comment	0	15-Apr-14 A	28-Apr-14 A	Temp Bridge "TD" Design - No Adverse Comment																							
0240-1045	Temp Bridge "TD" - Fabrication Pier F8 to F10	12	03-Feb-14 A	31-May-14	Temp Bridge "TD" - Fabrication Pier F8 to F10																							
0240-1046	Temp Bridge "TD" - Fabrication Pier F5 to F8 and F10 to F15	24	20-Apr-14 A	12-Jun-14	Temp Bridge "TD" - Fabrication Pier F5 to F8 and F10 to F15																							
0240-1110	Int. Noise Enclosure Structural Design - ER Review/Resubmission	6	17-Jan-14 A	25-May-14	Int. Noise Enclosure Structural Design - ER Review/Resubmission																							
0240-1111	Int. Noise Enclosure Structural Design - No Adverse Comment	28	26-May-14	22-Jun-14	Int. Noise Enclosure Structural Design - No Adverse Comment																							
0240-1113	Int. Noise Enclosure Structural - Shop Drawings Bridge F1A/F2A	12	02-Jan-14 A	31-May-14	Int. Noise Enclosure Structural - Shop Drawings Bridge F1A/F2A																							
0240-1115	Int. Noise Enclosure - Fabrication/Delivery Bridge F1A/F2A	42	14-Apr-14 A	30-Jun-14	Int. Noise Enclosure - Fabrication/Delivery Bridge F1A/F2A																							
0240-1132	Noise Barrier Structural - Shop Drawings	24	21-Mar-14 A	12-Jun-14	Noise Barrier Structural - Shop Drawings																							
0240-1133	Noise Barrier Structural - Fabrication/Delivery	90	23-Jun-14	20-Sep-14	Noise Barrier Structural - Fabrication/Delivery																							
0240-1136	Noise Barrier Panel - Design ER Review/Resubmission	30	01-Mar-14 A	18-Jun-14	Noise Barrier Panel - Design ER Review/Resubmission																							
0240-1137	Noise Barrier Panel - Design No Adverse Comment	28	19-Jun-14	16-Jul-14	Noise Barrier Panel - Design No Adverse Comment																							
0240-1138	Noise Barrier Panel - Fabrication Delivery	60	17-Jul-14	14-Sep-14	Noise Barrier Panel - Fabrication Delivery																							
0240-1270	Landscaping Design - Submission	90	01-Aug-14*	29-Oct-14	Landscaping Design - Submission																							
0240-1050	Temp Bridge "TB" Design - Prep & Submit	36	21-Feb-14 A	24-Jun-14	Temp Bridge "TB" Design - Prep & Submit																							
0240-1060	Temp Bridge "TB" Design - ER review and comment	28	25-Jun-14	22-Jul-14	Temp Bridge "TB" Design - ER review and comment																							
0240-1070	Temp Bridge "TB" Design - Resubmission	30	23-Jul-14	21-Aug-14	Temp Bridge "TB" Design - Resubmission																							
0240-1170	HGHK Permanent Carpark Design - Prep & Submit	90	01-Jul-14*	28-Sep-14	HGHK Permanent Carpark Design - Prep & Submit																							

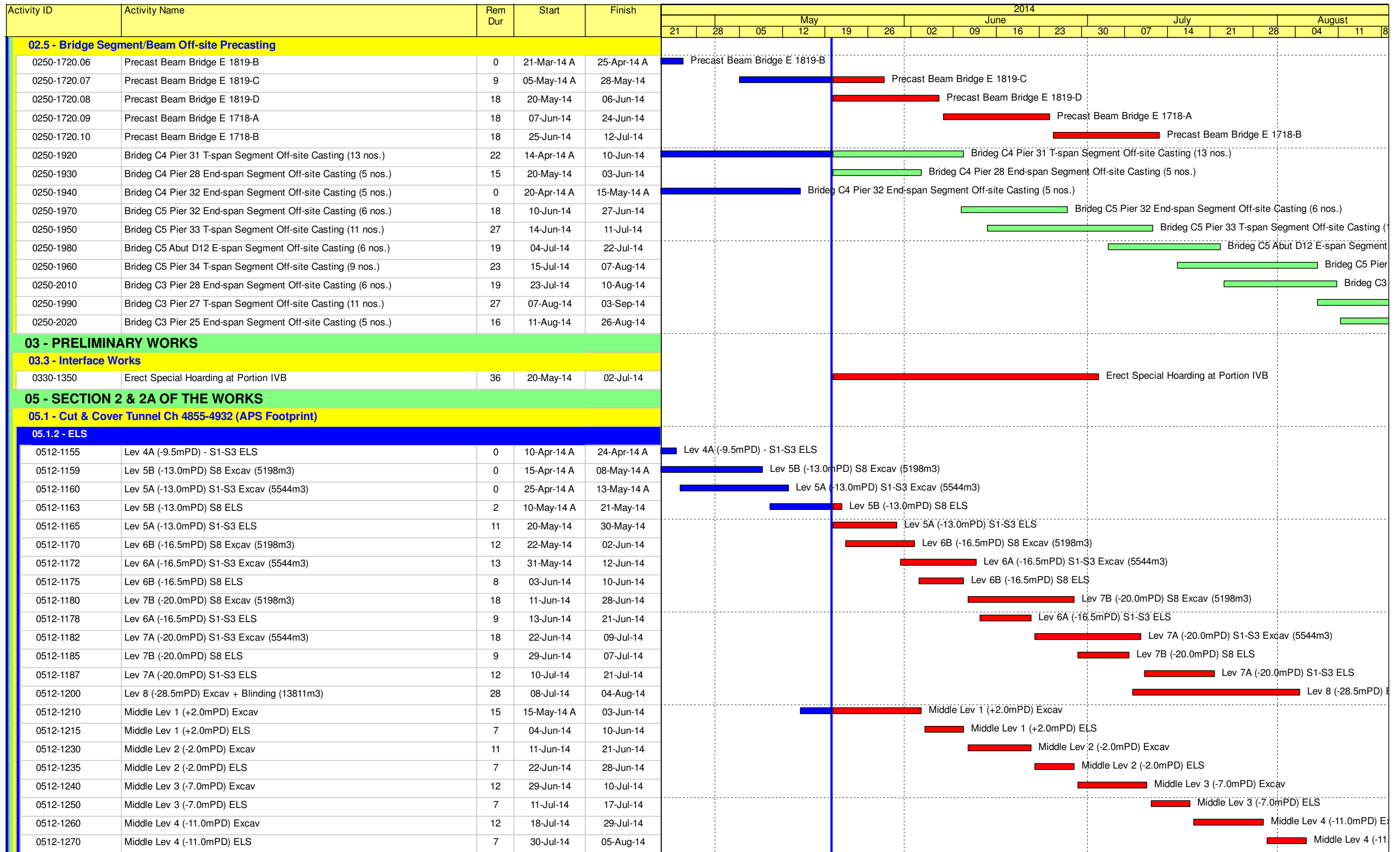
- Remaining Level of Effort
- Actual Level of Effort
- Actual Work
- Remaining Work
- Critical Remaining Work
- ◆ Milestone

Contract HY/2009/19

Three Month Rolling Programme (20 May to 19 Aug 2014)

3MRP

3MRP - May 2014 to Aug 2014



- Remaining Level of Effort
- Actual Level of Effort
- Actual Work
- Remaining Work
- Critical Remaining Work
- ◆ Milestone

Contract HY/2009/19

Three Month Rolling Programme (20 May to 19 Aug 2014)

3MRP

3MRP - May 2014 to Aug 2014

Page 2 of 8

Activity ID	Activity Name	Rem Dur	Start	Finish	2014																
					May					June				July				August			
					21	28	05	12	19	26	02	09	16	23	30	07	14	21	28	04	11
0512-1280	Middle Lev 5 (-15.0mPD) Excav + Blinding	9	06-Aug-14	14-Aug-14																	
0512-1220	Opening to Existing Bulkhead Wall	15	05-Aug-14	19-Aug-14																	
05.1.3 - APS Structure																					
0513-1310	APS Basement Slab - Prepare CJ and form keys into D-wall	12	06-Aug-14	19-Aug-14																	
0513-1320	APS Basement Slab - Waterproofing Membrane	18	13-Aug-14	02-Sep-14																	
0513-1330	APS Basement Slab - Rebar Fixing	28	16-Aug-14	18-Sep-14																	
05.2 - Cut & Cover Tunnel Ch 4932-5149																					
05.2.3 - ELS																					
0524-2889	Pump Sump - Excavation & Lateral Support	9	22-Apr-14 A	29-May-14																	
0524-2890	Pump Sump - Structure	18	30-May-14	20-Jun-14																	
05.2.4 - Tunnel Structure																					
0524-3015	Bay 1 Tunnel Vertical Wall	7	21-Jun-14	28-Jun-14																	
0524-3025	Bay 1 Tunnel False Works	6	30-Jun-14	07-Jul-14																	
0524-3035	Bay 1 Tunnel OHVD Slab	8	08-Jul-14	16-Jul-14																	
0524-3045	Bay 1 Tunnel Roof Slab	12	17-Jul-14	30-Jul-14																	
0524-3115	Bay 2 Tunnel Vertical Wall	7	13-Jun-14	20-Jun-14																	
0524-3125	Bay 2 Tunnel False Works	6	21-Jun-14	27-Jun-14																	
0524-3135	Bay 2 Tunnel OHVD Slab	8	28-Jun-14	08-Jul-14																	
0524-3145	Bay 2 Tunnel Roof Slab	12	09-Jul-14	22-Jul-14																	
0524-3525	Bay 10 Tunnel Roof Slab	0	04-Apr-14 A	25-Apr-14 A																	
0524-3575	Bay 11 Tunnel Roof Slab	0	14-Apr-14 A	28-Apr-14 A																	
0524-3615	Bay 12 Tunnel OHVD Slab	0	03-Apr-14 A	22-Apr-14 A																	
0524-3625	Bay 12 Tunnel Roof Slab	0	23-Apr-14 A	13-May-14 A																	
0524-3665	Bay 13 Tunnel OHVD Slab	0	18-Apr-14 A	26-Apr-14 A																	
0524-3675	Bay 13 Tunnel Roof Slab	0	28-Apr-14 A	09-May-14 A																	
0524-3475	Waterproof Top Slab Bay 5 to Bay 9	12	05-Jun-14	18-Jun-14																	
0524-3685	Waterproof Top Slab Bays 12 and 13	12	05-Jun-14	18-Jun-14																	
0524-3365	Waterproof Top Slab Bay 1 to Bay 4	14	31-Jul-14	15-Aug-14																	
05.2.5 - Road & Miscellaneous Works																					
0525-2940	Backfill above Tunnel Structure Bay 5 to Bay 9	15	12-Jun-14	28-Jun-14																	
0525-2950	Backfill above Tunnel Structure Bay 10 to Bay 13	15	12-Jun-14	28-Jun-14																	
0525-2882	Backfill above Tunnel Structure Bay 1 to Bay 4	7	16-Aug-14	23-Aug-14																	
0525-2890	Tunnel Road Drainage (excl vent bldg)	45	31-Jul-14	22-Sep-14																	
06 - SECTION 3 OF THE WORKS																					
06.1 - Westbound - Pier 29-34																					
0610-2126	Pier 29-3 Bored Pile (Normal)	18	24-Jul-14	14-Aug-14																	
06.2 - Box Culvert U1																					
0620-2632	1350mm Drainage MH 9-P to MH 3-1 Stage 1 - Sheet Pile	4	20-Mar-14 A	23-May-14																	
0620-2633	1350mm Drainage MH 9-P to MH 3-1 Stage 1 - Trench Excav	4	02-Apr-14 A	28-May-14																	
0620-2634	1350mm Drainage MH 9-P to MH 3-1 Stage 1 - Pipe Laying	2	29-May-14	30-May-14																	
0620-2635	1350mm Drainage MH 9-P to MH 3-1 Stage 1 - Backfill/Extract Sheet Pile	9	31-May-14	11-Jun-14																	
0620-2636	1350mm Drainage MH 9-P to MH 3-1 Stage 2 - Remove Pavement	7	14-Aug-14	22-Aug-14																	
06.3 - Admin Building																					
0630-3111	Admin Bldg Pre-bored H-pile GL A-F (31 nos.) - Drilling	39	27-Feb-14 A	07-Jul-14																	

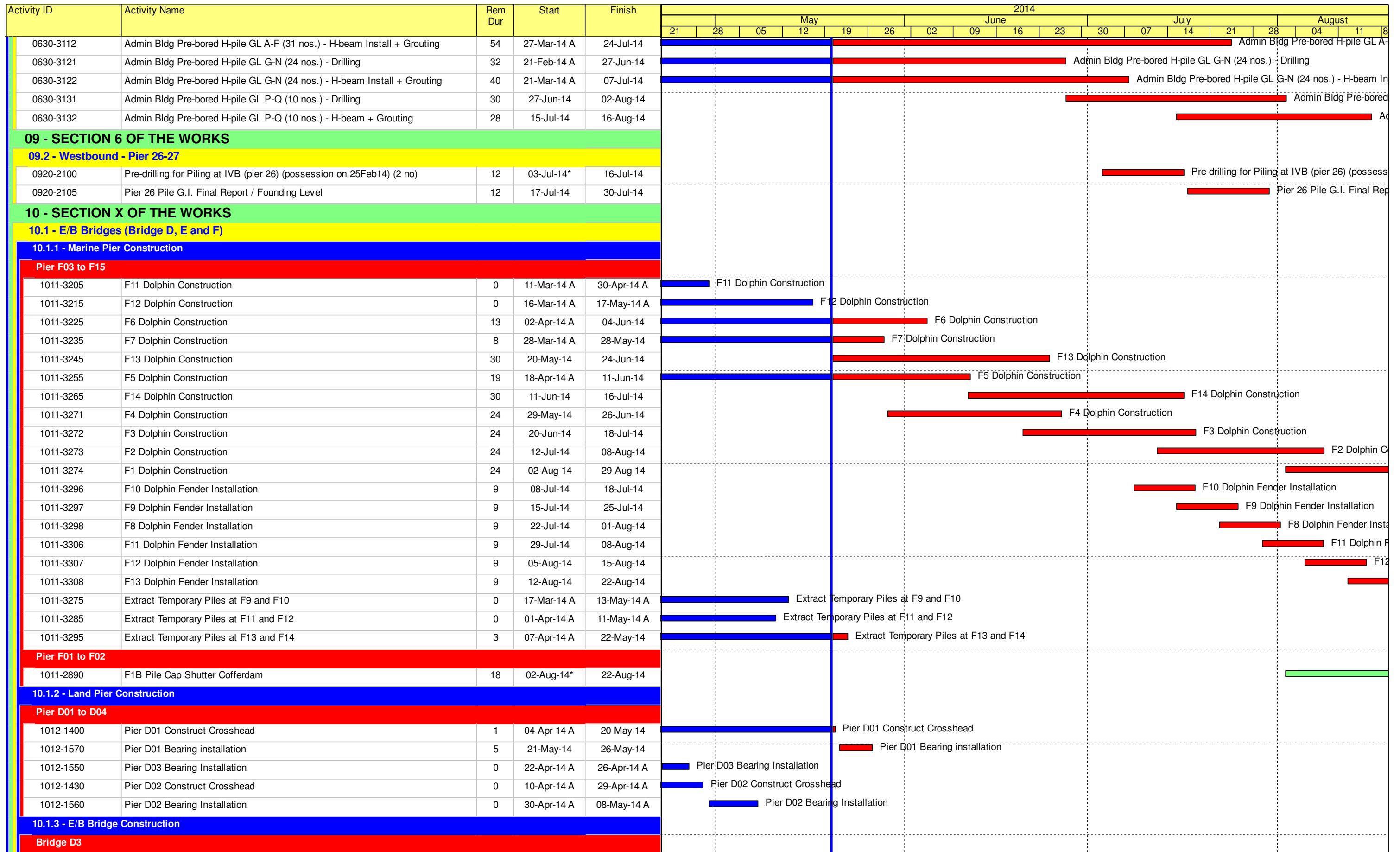
- █ Remaining Level of Effort
- █ Actual Level of Effort
- █ Actual Work
- █ Remaining Work
- █ Critical Remaining Work
- ◆ Milestone

Contract HY/2009/19

Three Month Rolling Programme (20 May to 19 Aug 2014)

3MRP

3MRP - May 2014 to Aug 2014



- █ Remaining Level of Effort
- █ Actual Level of Effort
- █ Actual Work
- █ Remaining Work
- █ Critical Remaining Work
- ◆ Milestone

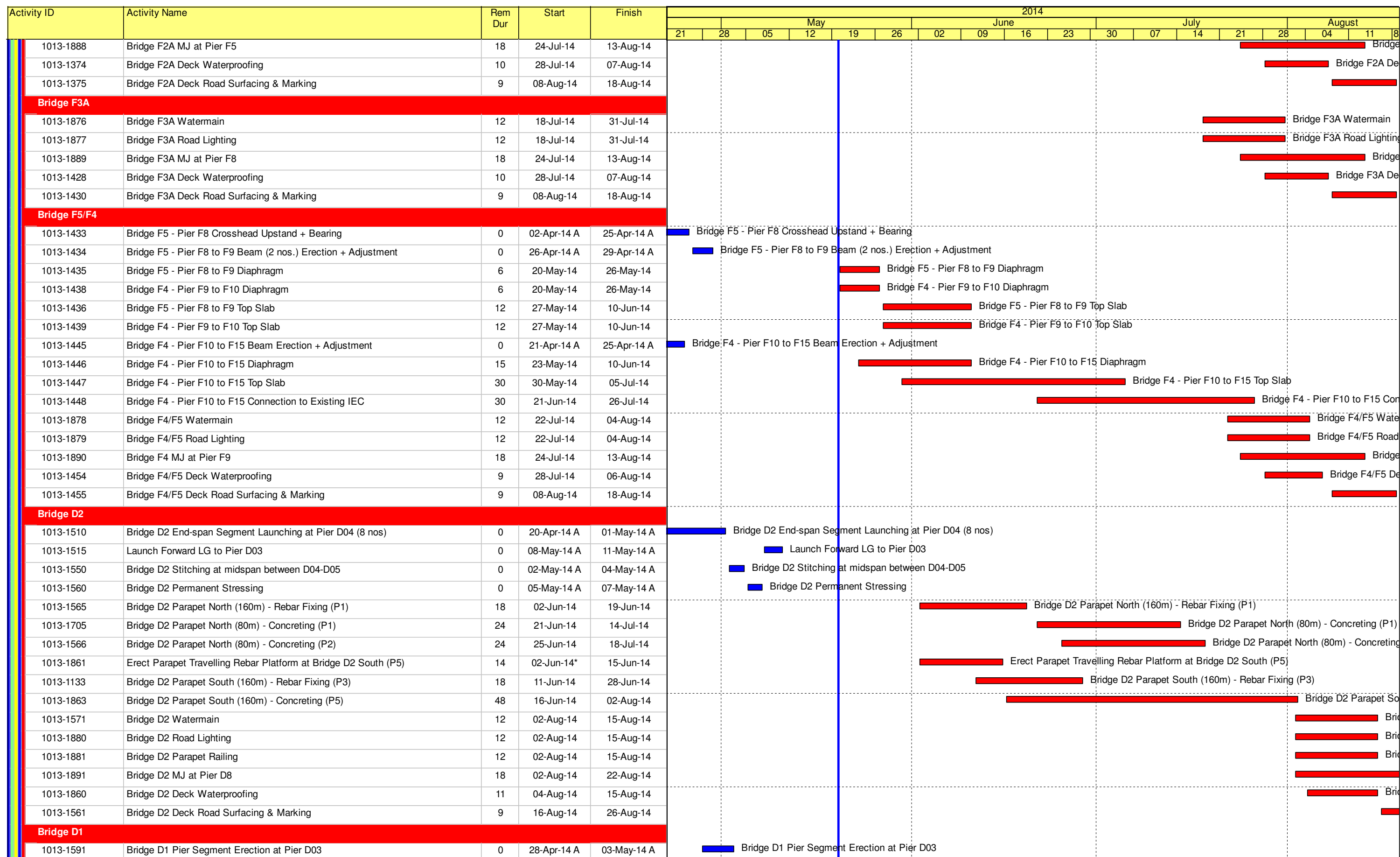
Contract HY/2009/19

Three Month Rolling Programme (20 May to 19 Aug 2014)

3MRP

3MRP - May 2014 to Aug 2014

Page 4 of 8



- Remaining Level of Effort
- Actual Level of Effort
- Actual Work
- Remaining Work
- Critical Remaining Work
- ◆ Milestone

Contract HY/2009/19

Three Month Rolling Programme (20 May to 19 Aug 2014)

3MRP

3MRP - May 2014 to Aug 2014

Page 6 of 8

Activity ID	Activity Name	Rem Dur	Start	Finish	2014																
					May					June					July				August		
					21	28	05	12	19	26	02	09	16	23	30	07	14	21	28	04	11
1013-1592	Launch Forward LG to Pier D02	1	12-May-14 A	20-May-14																	
1013-1593	Bridge D1 Pier Segment Erection at Pier D02	4	21-May-14	24-May-14																	
1013-1600	Bridge D1 Segment Launching T-span Pier D03 (16 nos)	5	23-May-14	28-May-14																	
1013-1605	Bridge D1 Segment Launching End-span at Pier D04 (7 nos)	4	29-May-14	03-Jun-14																	
1013-1606	Bridge D1 Stitching at midspan between D03-D04 + Tendon Stressing	7	04-Jun-14	11-Jun-14																	
1013-1607	Launch Forward LG to Pier D01	2	12-Jun-14	13-Jun-14																	
1013-1608	Bridge D1 Pier Segment Erection at Pier D01	3	14-Jun-14	17-Jun-14																	
1013-1610	Bridge D1 Segment Launching from Pier D02 (16 nos)	5	17-Jun-14	21-Jun-14																	
1013-1640	Bridge D1 Stitching at midspan between D02-D03	3	23-Jun-14	25-Jun-14																	
1013-1620	Bridge D1 Segment Launching from Pier D01 (8 nos)	4	27-Jun-14	30-Jun-14																	
1013-1650	Bridge D1 Stitching at midspan between D01-D02 + Tendon Stressing	5	01-Jul-14	05-Jul-14																	
1013-1660	Bridge D1 Permanent Stressing	15	06-Jul-14	20-Jul-14																	
1013-1704	Bridge D1 Parapet North (120m) - Rebar Fixing (P1)	17	15-Jul-14	31-Jul-14																	
1013-1708	Bridge D1 Parapet North (72m) - Concreting (P2)	21	21-Jul-14	10-Aug-14																	
1013-1706	Bridge D1 Parapet North (48m) - Concreting (P1)	14	01-Aug-14	14-Aug-14																	
1013-1701	Bridge D1 Parapet South (120m) - Rebar Fixing (P3)	17	15-Jul-14	31-Jul-14																	
1013-1709	Bridge D1 Parapet South (72m) - Concreting (P4)	21	21-Jul-14	10-Aug-14																	
1013-1703	Bridge D1 Parapet South (48m) - Concreting (P3)	14	01-Aug-14	14-Aug-14																	
1013-1711	Bridge D1 Watermain	12	01-Aug-14	14-Aug-14																	
1013-1882	Bridge D2 Road Lighting	12	01-Aug-14	14-Aug-14																	
1013-1883	Bridge D2 Parapet Railing	12	01-Aug-14	14-Aug-14																	
1013-1892	Bridge D1 MJ at Pier D1 and D4	18	02-Aug-14	22-Aug-14																	
1013-1715	Bridge D1 Deck Waterproofing	11	04-Aug-14	15-Aug-14																	
1013-1716	Bridge D1 Deck Road Surfacing & Marking	9	16-Aug-14	26-Aug-14																	
All E/B Bridges (Common)																					
1013-1821	E/B Bridge Temp. Hydrant + Watermain Testing	24	01-Aug-14	28-Aug-14																	
1013-1710	Permanent Noise Barrier Type C1 E/B Bridge Ch 1059-1362 (304m)	42	11-Aug-14	29-Sep-14																	
10.1.4 - Bridge E / Hing Fat Slip Road																					
Bridge Construction																					
1014-1172	Bridge E - Pier E1 to E2 - Diaphragm	4	22-Apr-14 A	23-May-14																	
1014-1173	Bridge E - Pier E1 to E2 - Top Slab	4	30-Apr-14 A	27-May-14																	
1014-1174	Bridge E - Pier E1 to E2 - Temporary Parapet	7	28-May-14	05-Jun-14																	
1014-1175	Bridge E - Pier E1 to D1 - Precast Beam (3 nos.)	6	28-May-14	04-Jun-14																	
1014-1176	Bridge E - Pier E1 to D1 - Diaphragm	7	21-Jul-14	28-Jul-14																	
1014-1177	Bridge E - Pier E1 to D1 - Top Slab	7	29-Jul-14	05-Aug-14																	
1014-1178	Bridge E - Pier E1 to D1 - Temporary Parapet	7	06-Aug-14	13-Aug-14																	
1013-1884	Bridge D1 Watermain	12	01-Aug-14	14-Aug-14																	
1013-1885	Bridge D2 Road Lighting	12	01-Aug-14	14-Aug-14																	
1013-1893	Bridge D1 MJ at Pier D1 and D4	18	02-Aug-14	22-Aug-14																	
10.2 - W/B Bridges (Bridge C and F)																					
10.2.1 - Pier Construction																					
Pier 20 to 25																					
1021-1010	Pier 23 Pre-drilling for Piling (2 nos.)	6	07-Jul-14*	12-Jul-14																	
1021-1015	Pier 23 Pile G.I. Final Report / Founding Level	18	14-Jul-14	02-Aug-14																	

- █ Remaining Level of Effort
- █ Actual Level of Effort
- █ Actual Work
- █ Remaining Work
- █ Critical Remaining Work
- ◆ Milestone

Contract HY/2009/19

Three Month Rolling Programme (20 May to 19 Aug 2014)

3MRP

3MRP - May 2014 to Aug 2014

Activity ID	Activity Name	Rem Dur	Start	Finish	2014															
					May					June					July				August	
					21	28	05	12	19	26	02	09	16	23	30	07	14	21	28	04
10.5 - Temporary Bridge																				
10.5.1 - Temporary Bridge 'TA'																				
1051-1017	Temporary Bridge TA1 - Bridge Decking + Tie-in to Existing HFSR	6	23-Sep-13 A	26-May-14	Temporary Bridge TA1 - Bridge Decking + Tie-in to Existing HFSR															
1051-1018	Temporary Bridge TA1 - Parapet	6	13-Jan-14 A	26-May-14	Temporary Bridge TA1 - Parapet															
10.5.3 - Temporary Bridge 'TD'																				
1053-1010	"TD" - Pier F8 to F10 Tower Erection (3 nos.)	4	14-Apr-14 A	23-May-14	"TD" - Pier F8 to F10 Tower Erection (3 nos.)															
1053-1011	"TD" - Pier F8 to F10 Beam Erection	12	13-May-14 A	07-Jun-14	"TD" - Pier F8 to F10 Beam Erection															
1053-1012	"TD" - Pier F8 to F10 Bond Deck Erection	15	07-Jun-14	25-Jun-14	"TD" - Pier F8 to F10 Bond Deck Erection															
1053-1013	"TD" - Pier F8 to F10 Slab Construction	12	25-Jun-14	10-Jul-14	"TD" - Pier F8 to F10 Slab Construction															
1053-1014	"TD" - Pier F8 to F10 Parapet	12	10-Jul-14	24-Jul-14	"TD" - Pier F8 to F10 Parapet															
1053-1015	"TD" - Pier F8 to F10 Connection to Bridge F4/F5	18	10-Jul-14	31-Jul-14	"TD" - Pier F8 to F10 Connection to Bridge F4/F5															
1053-1021	"TD" - Pier F10 to F14 Tower Erection	18	07-Jun-14	28-Jun-14	"TD" - Pier F10 to F14 Tower Erection															
1053-1061	"TD" - Pier F10 to F14 Beam Erection	18	28-Jun-14	21-Jul-14	"TD" - Pier F10 to F14 Beam Erection															
1053-1062	"TD" - Pier F10 to F14 Bond Deck Erection	18	21-Jul-14	11-Aug-14	"TD" - Pier F10 to F14 Bond Deck Erection															
1053-1063	"TD" - Pier F10 to F14 Slab Construction	18	11-Aug-14	01-Sep-14	"TD" - Pier F10 to F14 Slab Construction															
1053-1074	"TD" - Pier F5 to F8 Tower Erection	15	05-Jun-14	21-Jun-14	"TD" - Pier F5 to F8 Tower Erection															
1053-1094	"TD" - Pier F5 to F8 Beam Erection	18	16-Jun-14	07-Jul-14	"TD" - Pier F5 to F8 Beam Erection															
1053-1104	"TD" - Pier F5 to F8 Bond Deck Erection	18	26-Jun-14	17-Jul-14	"TD" - Pier F5 to F8 Bond Deck Erection															
1053-1114	"TD" - Pier F5 to F8 Slab Construction	18	08-Jul-14	28-Jul-14	"TD" - Pier F5 to F8 Slab Construction															
1053-1115	"TD" - Pier F5 to F8 Connection to Bridge F3A	18	08-Jul-14	28-Jul-14	"TD" - Pier F5 to F8 Connection to Bridge F3A															
1053-1124	"TD" - Pier F5 to F8 Parapet	15	18-Jul-14	04-Aug-14	"TD" - Pier F5 to F8 Parapet															
10.6 - Tunnel Approach Ramp																				
10.6.1 - Approach Ramp (Excluding Portion IIB)																				
Bored Piles																				
1061-1670	Remaining Pre-drilling for Approach Ramp Bored Piles	18	19-Jul-13 A	10-Jun-14	Remaining Pre-drilling for Approach Ramp Bored Piles															
1061-1830	Bored Pile Ramp - BM32	0	09-Apr-14 A	24-Apr-14 A	Bored Pile Ramp - BM32															
1061-1840	Bored Pile Ramp - BM21	0	14-Apr-14 A	28-Apr-14 A	Bored Pile Ramp - BM21															
1061-1850	Bored Pile Ramp - BM13	1	23-Apr-14 A	20-May-14	Bored Pile Ramp - BM13															
1061-1860	Bored Pile Ramp - BM20	1	05-May-14 A	20-May-14	Bored Pile Ramp - BM20															
1061-1880	Bored Pile Ramp - BM36	6	08-May-14 A	26-May-14	Bored Pile Ramp - BM36															
1061-1890	Bored Pile Ramp - BM29	13	19-May-14 A	04-Jun-14	Bored Pile Ramp - BM29															
1061-1870	Bored Pile Ramp - BM28	0	29-Apr-14 A	17-May-14 A	Bored Pile Ramp - BM28															
1061-1900	Bored Pile Ramp - BM34	15	27-May-14	13-Jun-14	Bored Pile Ramp - BM34															
1061-1910	Bored Pile Ramp - BM16	15	05-Jun-14	21-Jun-14	Bored Pile Ramp - BM16															
1061-1920	Bored Pile Ramp - BM23	15	14-Jun-14	02-Jul-14	Bored Pile Ramp - BM23															
1061-1930	Bored Pile Ramp - BM28	15	23-Jun-14	10-Jul-14	Bored Pile Ramp - BM28															
1061-1940	Bored Pile Ramp - BM24	15	03-Jul-14	19-Jul-14	Bored Pile Ramp - BM24															
10.7 - Section X - Miscellaneous Works																				
10.7.1 - TTM Stages																				
1071-1005	TTA Stage 2A - TMLG / TD / Police Consultation and Endorsement	35	19-May-14 A	30-Jun-14	TTA Stage 2A - TMLG / TD / Police Consultation and Endorsement															

- Remaining Level of Effort
- Actual Level of Effort
- Actual Work
- Remaining Work
- Critical Remaining Work
- ◆ Milestone

Contract HY/2009/19

Three Month Rolling Programme (20 May to 19 Aug 2014)

3MRP

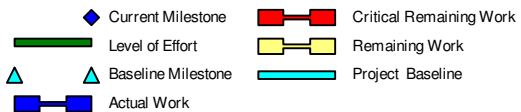
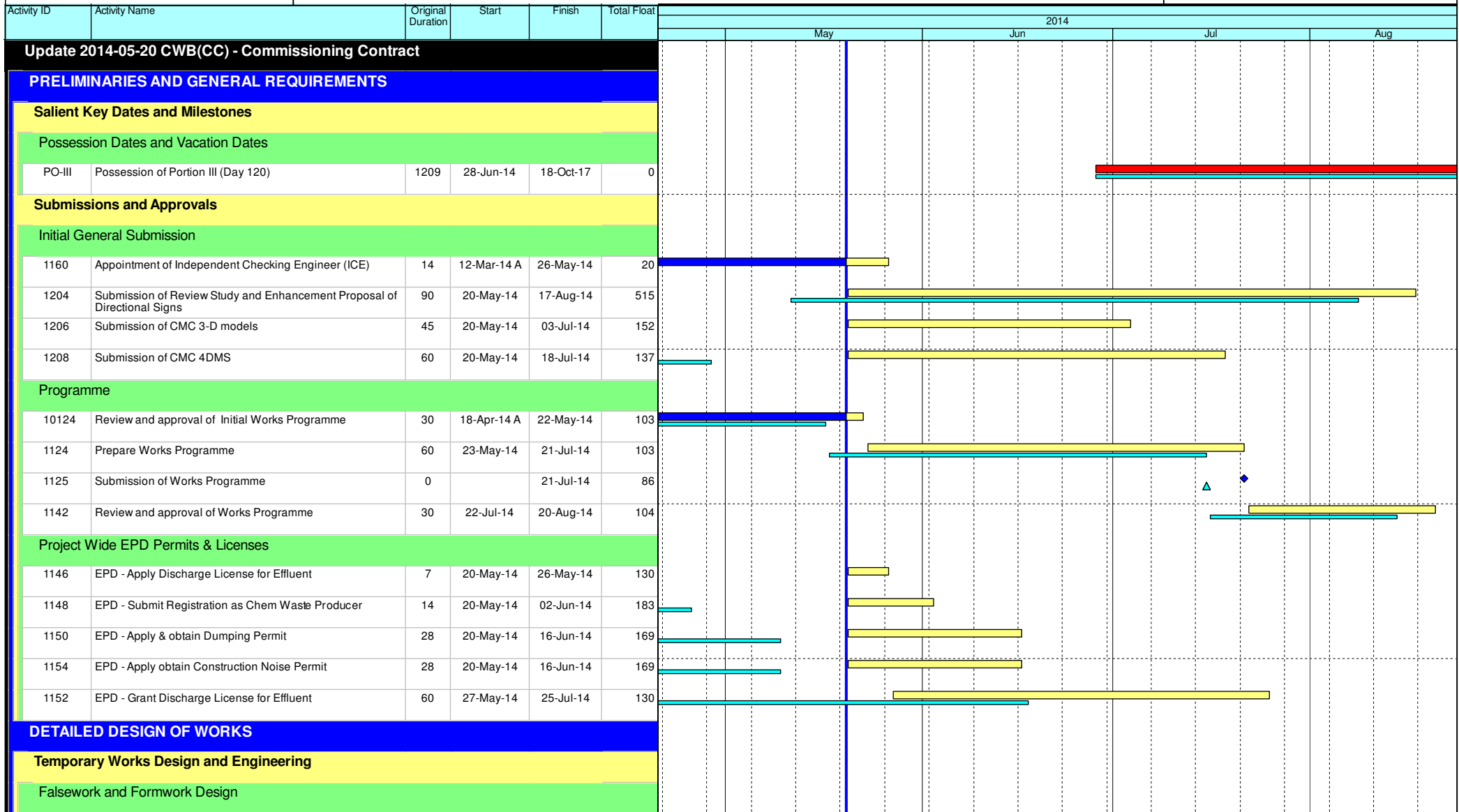
3MRP - May 2014 to Aug 2014

Page 8 of 8

Data Date: 20-May-14

CWB(CC) - Commissioning Contract

TASK filters: 3 Months_2, Not HL.



Leighton Contractors (Asia) Limited Programme Update 03 (May 2014) THREE MONTH ROLLING

Project ID: 3MRP-U003
 Baseline: IWPB
 Layout: Update Three Month Rolling U003
 Page 1 of 4

Date	Revision	Checked	Appro...
20-Apr-14	U002	AT	CW
20-May-14	U003	AT	CW

Data Date: 20-May-14

CWB(CC) - Commissioning Contract

TASK filters: 3 Months_2, Not HL.

Activity ID	Activity Name	Original Duration	Start	Finish	Total Float	2014			
						May	Jun	Jul	Aug
10066	Falsework & Formwork- Design preparation	56	20-May-14	25-Jul-14	90	[Gantt bar: 20-May-14 to 25-Jul-14]			
10068	Falsework & Formwork- Method Statement preparation	56	26-Jul-14	30-Sep-14	90	[Gantt bar: 26-Jul-14 to 30-Sep-14]			
Permanent Works Design and Engineering									
Metal Roof on WVB									
2168	WVB Roof - Prepare Preliminary Design and Submission	48	29-May-14	25-Jul-14	14	[Gantt bar: 29-May-14 to 25-Jul-14]			
2170	WVB Roof - Finalise preliminary design and ICE Review	24	26-Jul-14	22-Aug-14	14	[Gantt bar: 26-Jul-14 to 22-Aug-14]			
Tunnel Ventilation System (TVS)									
2040	TVS - Prepare Preliminary Design and Submission	90	17-Jun-14	03-Oct-14	70	[Gantt bar: 17-Jun-14 to 03-Oct-14]			
Air Purification System (APS)									
2196	APS - Sub contract Award	6	15-Apr-14 A	22-May-14	13	[Gantt bar: 15-Apr-14 to 22-May-14]			
2340	APS - SMP	30	23-May-14	03-Jul-14	11	[Gantt bar: 23-May-14 to 03-Jul-14]			
2338	APS - Sub systems Design submission	25	27-May-14	30-Jun-14	29	[Gantt bar: 27-May-14 to 30-Jun-14]			
2342	APS - FAT ESP	66	04-Jul-14	03-Oct-14	26	[Gantt bar: 04-Jul-14 to 03-Oct-14]			
2344	APS - FAT DeNO2	66	04-Jul-14	03-Oct-14	26	[Gantt bar: 04-Jul-14 to 03-Oct-14]			
Traffic Control and Surveillance System (TCSS)									
2096	TCSS - Prepare Preliminary Design and Submission	90	04-Jul-14	20-Oct-14	14	[Gantt bar: 04-Jul-14 to 20-Oct-14]			
Electrical System									
2110b	ES - Prepare Drawing Submission	48	20-May-14 A	15-Jul-14	18	[Gantt bar: 20-May-14 to 15-Jul-14]			
2110c	ES - LV MAIN SCHEMATIC WIRING DIAGRAM - WVB	0		20-May-14 A		[Milestone: 20-May-14]			
2110d	ES - LV MAIN SCHEMATIC WIRING DIAGRAM - MVB	0		20-May-14 A		[Milestone: 20-May-14]			
2110e	ES - LV MAIN SCHEMATIC WIRING DIAGRAM - EVB	0		20-May-14 A		[Milestone: 20-May-14]			
2110f	ES - LV MAIN SCHEMATIC WIRING DIAGRAM - ADB	0		20-May-14 A		[Milestone: 20-May-14]			
2110g	ES - TUNNEL LV SUBMAIN SCHEMATIC WIRING DIAGRAM	0		20-May-14 A		[Milestone: 20-May-14]			
2110	ES - Prepare Preliminary Design and Submission	60	20-May-14 A	29-Jul-14	6	[Gantt bar: 20-May-14 to 29-Jul-14]			
2110a	ES - Prepare Calculation Submission	24	02-Jul-14	29-Jul-14	6	[Gantt bar: 02-Jul-14 to 29-Jul-14]			

- ◆ Current Milestone
- Critical Remaining Work
- Level of Effort
- Remaining Work
- ▲ Baseline Milestone
- Project Baseline
- Actual Work

Leighton Contractors (Asia) Limited Programme Update 03 (May 2014) THREE MONTH ROLLING

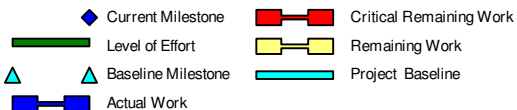
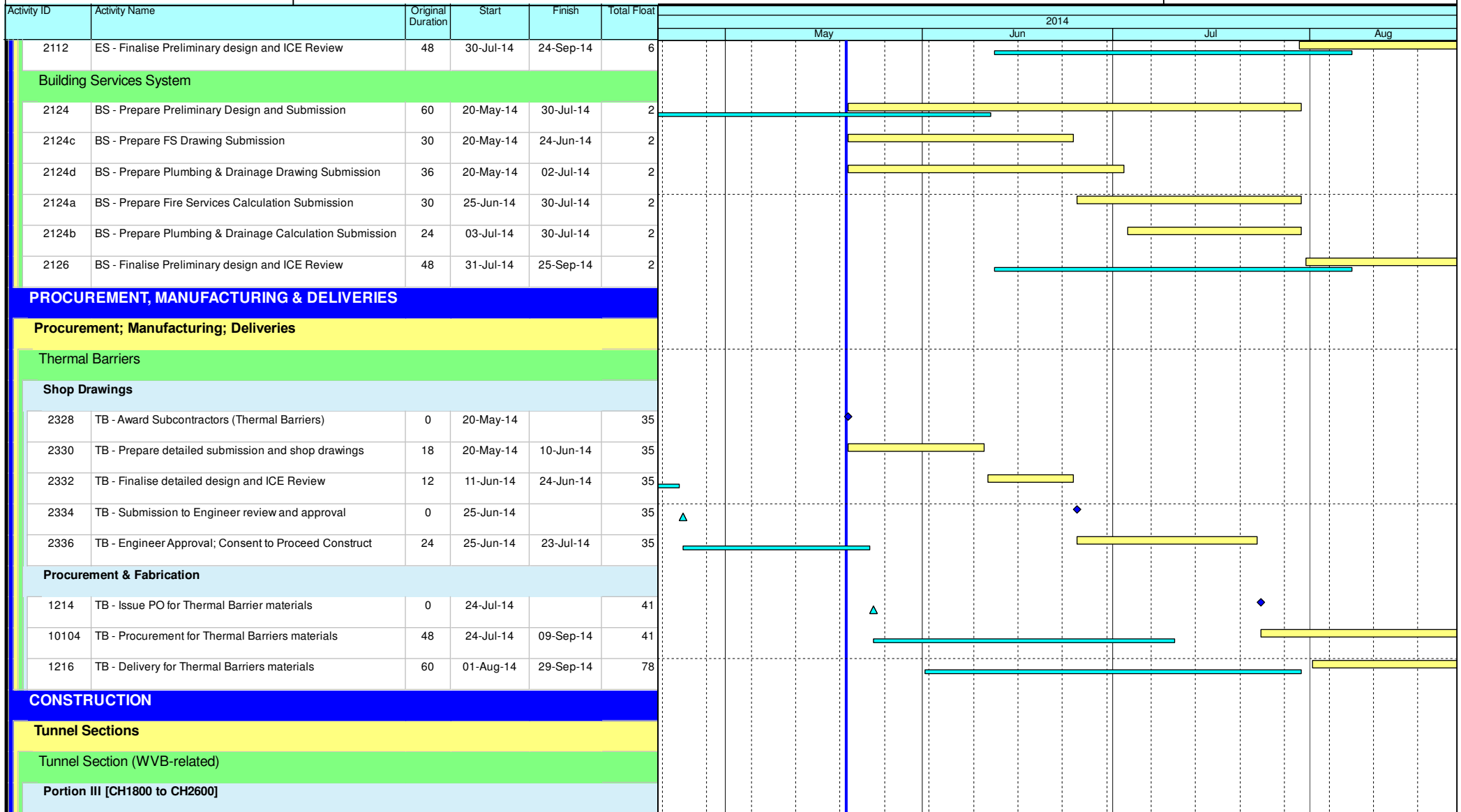
Project ID: 3MRP-U003
 Baseline: IWPB
 Layout: Update Three Month Rolling U003
 Page 2 of 4

Date	Revision	Checked	Appro...
20-Apr-14	U002	AT	CW
20-May-14	U003	AT	CW

Data Date: 20-May-14

CWB(CC) - Commissioning Contract

TASK filters: 3 Months_2, Not HL.



Leighton Contractors (Asia) Limited Programme Update 03 (May 2014) THREE MONTH ROLLING

Project ID: 3MRP-U003
Baseline: IWPB
Layout: Update Three Month Rolling U003
Page 3 of 4








Date	Revision	Checked	Appro...
20-Apr-14	U002	AT	CW
20-May-14	U003	AT	CW

Data Date: 20-May-14

CWB(CC) - Commissioning Contract

TASK filters: 3 Months_2, Not HL.

Activity ID	Activity Name	Original Duration	Start	Finish	Total Float	2014																	
						May			Jun			Jul			Aug								
4918	Possession of Portion III	0	28-Jun-14		70																		
4920	III - Initial Site Survey	12	28-Jun-14	12-Jul-14	70																		
Westbound																							
4922	III(WB) - Mobilisation & Setup	12	14-Jul-14	26-Jul-14	70																		

-  Current Milestone
-  Critical Remaining Work
-  Level of Effort
-  Remaining Work
-  Baseline Milestone
-  Project Baseline
-  Actual Work

Leighton Contractors (Asia) Limited Programme Update 03 (May 2014) THREE MONTH ROLLING

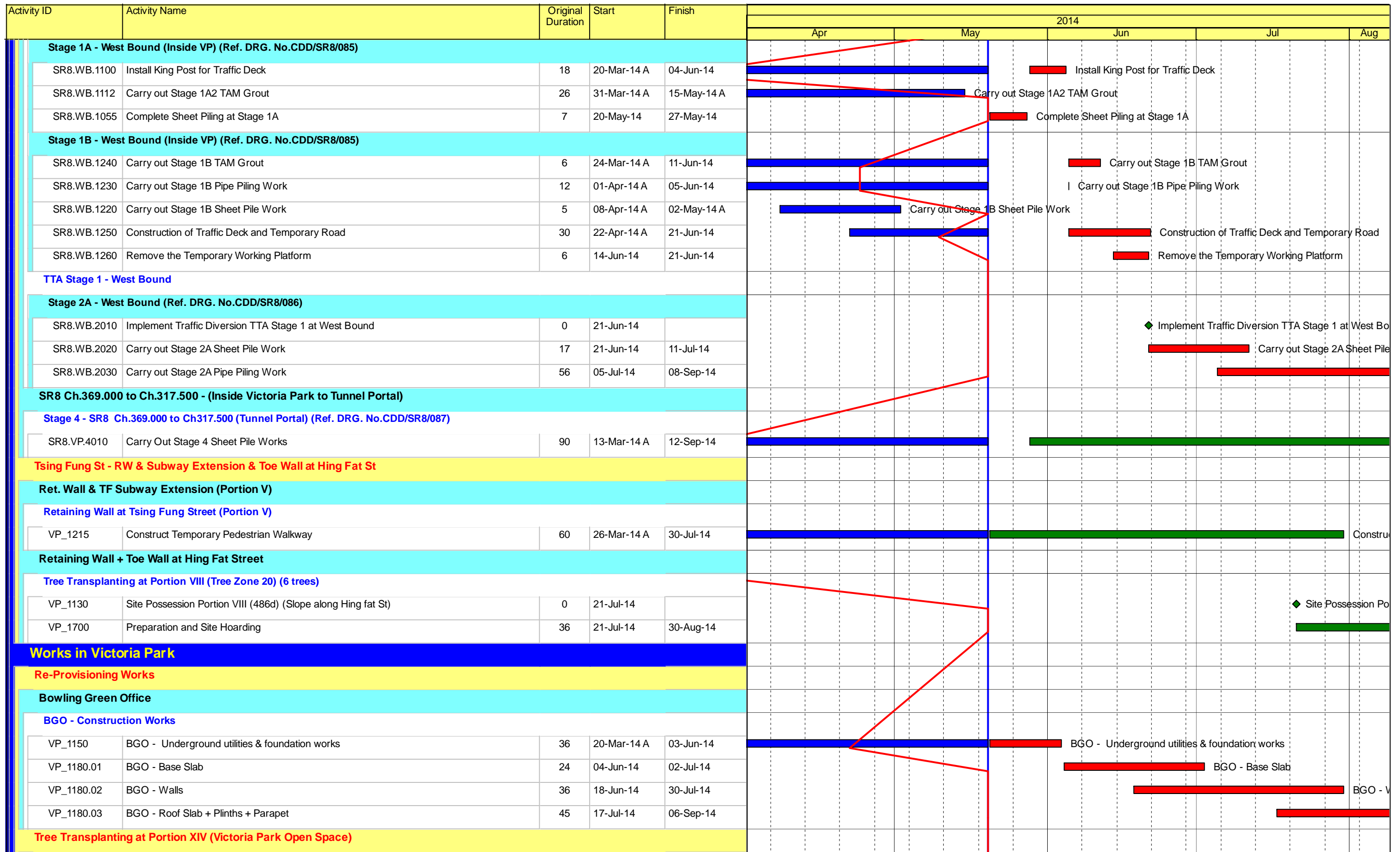
Project ID: 3MRP-U003
 Baseline: IWPB
 Layout: Update Three Month Rolling U003
 Page 4 of 4

Date	Revision	Checked	Appro...
20-Apr-14	U002	AT	CW
20-May-14	U003	AT	CW

Activity ID	Activity Name	Original Duration	Start	Finish	2014				
					Apr	May	Jun	Jul	Aug
DWP: HY/2010/08- Central-Wan Chai Bypass Tunnel (Slip Road 8 Section) (Open Cut Method)									
Works in TS3									
TS3 East & West Reclamation Works									
TS3E - Reclamation (Advance Works)									
TS3E.MW.1070	C15 - Relocate Vessels	24	26-Mar-14 A	03-Jun-14*	C15 - Relocate Vessels				
TS3E.MW.1110	TS3E South - Commence Water Intake Diversion	0	29-May-14		◆ TS3E South - Commence Water Intake Diversion				
TS3E.MW.1140	C15 - Complete TZ2 (Forecast Completion of TZ2)	0		31-May-14*	◆ C15 - Complete TZ2 (Forecast Completion of TZ2)				
TS3E.MW.1150	C15 - Move TS3(E) vessels (Phase III Mooring)	12	03-Jun-14	16-Jun-14	C15 - Move TS3(E) vessels (Phase III Mooring)				
TS3E.MW.1080	TS3E South - Dredging Works (Type 3)	19	04-Jun-14	25-Jun-14	TS3E South - Dredging Works (Type 3)				
TS3E.MW.1040	TS3E North - Seawall Block Installation	30	17-Jun-14	22-Jul-14	TS3E North - Seawall Block Installation				
TS3E.MW.1085	TS3E South - Dredging Works (Type 1 & 2)	28	26-Jun-14	29-Jul-14	TS3E South - Dredging Works (Type 1 & 2)				
TS3E.MW.1090	TS3E South - Rockfill + Levelling	20	21-Jul-14	12-Aug-14	TS3E South - Rockfill + Levelling				
Works in SR8 (Open Cut Method)									
SR8 - Cofferdam & Cut & Cover Tunnel Works									
SR8 East Bound - (Seaside to Victoria Road / IEC Central Divider)									
TTA Stage 0 - East Bound									
Stage 1A - East Bound (Seaside) (Ref. DRG. No.CDD/SR8/082)									
SR8.EB.1130	Relocation of Hydrant	12	17-Feb-14 A	15-May-14 A	Relocation of Hydrant				
Stage 1B - East Bound (Seaside) (Ref. DRG. No.CDD/SR8/082)									
SR8.EB.1210	Carry-out preboring for Stage 1B Sheet Pile	11	27-Feb-14 A	12-May-14 A	Carry-out preboring for Stage 1B Sheet Pile				
SR8.EB.1220	Carry-out Stage 1B Sheet Piling works	4	19-May-14 A	20-May-14 A	Carry-out Stage 1B Sheet Piling works				
SR8.EB.1230	Carry-out Stage 1B Pipe Piling works	24	21-May-14 A	07-Jun-14	Carry-out Stage 1B Pipe Piling works				
SR8.EB.1250	Install King Post for Traffic Deck (3 nos.)	16	09-Jun-14	26-Jun-14	Install King Post for Traffic Deck (3 nos.)				
SR8.EB.1255	Carry-out Stage 1B TAM Grout + Jet Grouting (12nos)	22	09-Jun-14	04-Jul-14	Carry-out Stage 1B TAM Grout + Jet Grouting (12nos)				
SR8.EB.1260	Construct Traffic Deck and Temporary Road	24	27-Jun-14	25-Jul-14	Construct Traffic Deck and Temporary Road				
SR8.EB.1270	Install Temporary Traffic Directional Signs for TTA Stage 1	6	19-Jul-14	25-Jul-14	Install Temporary Traffic Directional Signs for TTA Stage 1				
TTA Stage 1 - East Bound									
Stage 2 - East Bound (Ref. DRG. No.CDD/SR8/083)									
SR8.EB.1310	Implement TTA Stage 1 - Traffic Diversion at East Bound (DRG Ref. 4843/011/021E)	0	26-Jul-14		◆ Implement TTA Stage 1 - Traffic Diversion at East Bound (DRG Ref. 4843/011/021E)				
SR8.EB.1315	Excavate Trench and Expose underground utilities (Carriage way)	8	26-Jul-14	04-Aug-14	Excavate Trench and Expose underground utilities (Carriage way)				
SR8 West Bound - Ch. 369.000 to 495.000 (Victoria Road / IEC Central Divider)									
TTA Stage 0 (West Bound)									
Victoria Park - Zone 1,2,3,4,5 & 10 Tree Transplanting, DBH 300-500mm (5 Trees)									
SR8_1105	Tree Transplanting Preparatory Works	30	03-Apr-13 A	09-May-14 A	Tree Transplanting Preparatory Works				

- █ Actual Work
- █ Remaining Work
- █ Critical Remaining Work
- ◆ Milestone

Date	Revision	Checked	Approved
20-May-14	Updated to 20th Apr 2014	DML/WC	



Activity ID	Activity Name	Original Duration	Start	Finish	2014											
					Apr			May			Jun			Jul		
VP_1040	Tree Transplanting & Upkeep at Portion XIV	348	16-Oct-13 A	15-Dec-14	[Gantt bars for VP_1040: Apr, May, Jun, Jul, Aug]											
Mooring Components Upkeep (CBTS and ATS)																
MAR_2000	Mooring Upkeep at Portion XIX(19) & XX(20) - ATS (if instructed by Engineer)	1399	21-Mar-14 A	17-Jan-17	[Gantt bars for MAR_2000: Apr, May, Jun, Jul, Aug]											
MAR_1000	Mooring Upkeep at Portion III (3) - CBTS	574	20-May-14	14-Dec-15	[Gantt bars for MAR_1000: Apr, May, Jun, Jul, Aug]											
MAR_3020	Mooring Upkeep at Portion X(10) & XVI(16) - CBTS	979	20-May-14	22-Jan-17	[Gantt bars for MAR_3020: Apr, May, Jun, Jul, Aug]											
Works for Public Works Regional Laboratory (North Lantau)																
Maintenance and Upkeep of New PWRL (Portion XVII)																
PWRL_1050	Maintenance/ Upkeep of New PWRL	1301	19-Jul-13 A	20-Nov-17	[Gantt bars for PWRL_1050: Apr, May, Jun, Jul, Aug]											